



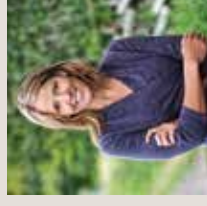
735 ANTELOPE RIDGE | BELGRADE, MONTANA

MLS# 330495 | \$764,900



Real Estate Group

3960 Valley Commons Ste 1 | Bozeman, MT 59718



Jody Savage
Broker/Owner
REALTOR, GRI, CREA
406-209-8884
jody@jodysavage.com
jodysavage.com

735 ANTELOPE RIDGE | BELGRADE, MONTANA

QUICK FACT SHEET

Price: 764,900

MLS# 330495

Total Square Footage: 3,758

Year Built: 2006

Lot Size: 1.641 acres

Bedrooms | Baths | Layout

Main Level: Great Room, Dining Room, Kitchen,
Master Suite and 1 Bed, 1 1/2 Bath, Laundry Room

Second Floor: 2 Bed/2 Bath + Flex space + Bonus Room

Appliances

Cooktop, Dishwasher, Disposal, Dryer, Microwave, Refrigerator,
Wall Oven, Washer, Water Softener

Heating | Cooling:

2 Furnaces, Forced Air, Wood Burning Fireplace Insert
2 Air Conditioner Units

Garage: 3 Car Attached

Taxes: \$4,860.39

All information contained herein is gathered from a variety of sources deemed reliable, however, it is not guaranteed or verified by the seller or Savage Real Estate Group.
We urge independent verification of each and every item submitted to the satisfaction of a prospective purchaser.