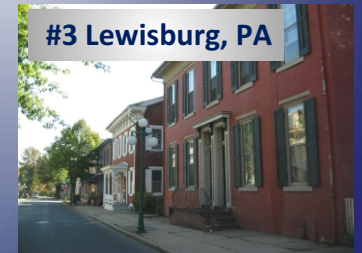


# 2019

## Metropolitan

## Micropolitan

# Economic Strength Rankings



Economic Strength is the long-term tendency for an area to consistently grow in both size and quality.



**POLICOM Corporation**  
**Economic Strength Rankings - 2019**  
**By William H. Fruth**

*“Economic strength is the long-term tendency for an area to consistently grow in both size and quality.”*

POLICOM specializes in studying the dynamics of local economies. From its research, it determines if an area is growing or declining, what is causing this to happen, and offers ideas and solutions to communities to improve the situation.

POLICOM addresses the condition of an economy from the viewpoint of its impact upon the “standard of living” of the people who live and work in an area.

The economic strength rankings are created so POLICOM can study the characteristics of strong and weak economies. The highest ranked areas have had rapid, consistent growth in both size and quality for an extended period. The lowest ranked areas have been in decline for an extended period.

POLICOM has created economic strength rankings for all Metropolitan Statistical Areas since 1996 and all Micropolitan Statistical Areas since they were created in 2002.

**Statistical Area Definitions:**

Metropolitan and Micropolitan Areas are geographically defined by the Office of Management and Budget (OMB), The White House. The definitions are announced through “Bulletins” issued by the OMB. The principal criteria to determine a statistical area is commuting patterns. A local economy is defined by where people live and work, earn and spend. Oftentimes this activity crosses county boundaries.

The 2019 Economic Strength Rankings are geographically based on OMB Bulletin 18-3 published April 10, 2018. The only change to the statistical area definitions from the previous year was the addition of the Pearsall, TX Micropolitan Statistical Area (Frio County).

However, on September 14, 2018 the OMB issued Bulletin 18-04, which altered the definition for 124 counties.

This is the most comprehensive change in the definitions of the Metropolitan and Micropolitan areas since the changes made in 2002. At the time the 2019 Economic Strength Rankings were created, the BEA (and likely no other government agency) had not aggregated its data set to the definitions included in Bulletin 18-04. The BEA has informed POLICOM such aggregation will not occur until the data release of October 2019.

**Contact POLICOM**

**2740 SW Martin  
Downs Blvd. #279  
Palm City, FL  
34990**

**772-781-5559  
info@policom.com  
www.policom.com**

### **Metropolitan Statistical Areas:**

Metropolitan Statistical Areas have at least one urbanized area with a population of at least 50,000, plus adjacent territory (counties) which have a high degree of social and economic integration with the core as measured by commuting. They must have at minimum of one county but most include several counties.

There are 383 Metropolitan Statistical Areas (Bulletin 18-3).

### **Micropolitan Statistical Areas:**

Once looked upon as quasi-rural areas, a Micropolitan Statistical Area must have an urbanized area (city) with a population of at least 10,000 but fewer than 50,000. They must be at least one county and most are.

There are 551 Micropolitan Statistical Areas (Bulletin 18-3).

### **Economic Strength Methodology:**

The formulas used to determine economic strength measure how the economy has behaved, not what has caused it to perform. The following are the data sectors used to create the rankings.

Regional Economic Information System (REIS) data is the principal data set used to create the rankings. It is published by the Bureau of Economic Analysis (BEA), US Department of Commerce. The data set has been collected in a reasonably consistent manner using source data since 1969.

Data for 2017 was released by the Bureau of Economic Analysis in October of 2018. There has been an important change in the REIS data set used by POLICOM for the 2019 rankings.

**In previous data releases, the BEA published a complete data history from 1969 to the most recent year. As an example, the data set published in October of 2017 included data from 1969 to 2016. This provided an excellent resource to study historical trends and events.**

**However, for unanswered reasons, the BEA changed its data series in its October of 2018 release to include only data from 2001 to 2017. This has influenced the methodology for the 2019 rankings.**

**The time series used in previous rankings included the most recent twenty years. As an example, the rankings published in 2018 utilized data from 1997 to 2016. However, because of the BEA truncated the data series, the only data available for the 2019 rankings ranges from 2001 to 2017. Consequently, fewer data years are available for the 2019 rankings. Please see "Time Periods" which follows.**

**The economic strength rankings measure how the areas have behaved, not why.**

## Industrial Sectors:

Group 1 – These sectors reflect the overall growth in size and quality. The “quality” of the economy is based upon what people earn, as this influences their “standard of living” more than anything.

- All Workers - Earnings
- All Workers - Jobs
- All Workers – Wages
- Per Capita Total Worker Earnings
- Per Capita Personal Income
- Earnings by Place of Residence
- Per Capita Earnings by Residences
- Wage & Salaried Workers - Earnings
- Wage & Salaried Workers - Jobs
- Wage & Salaried Workers - Wages

Group 2 – These sectors reflect how the economy is behaving. Small businesses and the construction and retail industries are extremely reactive to the “flow of money” coming into an area. They typically grow or decline in direct proportion to the condition of the economy. There are, of course, exceptions. Areas, which have become destinations for retirement age individuals will have high growth numbers in both construction and retail, while they might not have a strong economy.

- Non Farm Proprietors - Earnings
- Non Farm Proprietors - Jobs
- Non Farm Proprietors - Wages
- Construction - Worker Earnings
- Construction - Jobs
- Construction - Wages
- Retail - Worker Earnings
- Retail - Jobs
- Retail - Wages

Group 3 – These sectors are negative sectors. Growth in these reflects a poor economy.

- Per Capita Income Maintenance (Welfare)
- Actual Per Capita Income Maintenance (Welfare)
- Per Capita Medical Assistance for the Poor - (Medicaid)
- Actual Per Capita Medical Assistance for the Poor – (Medicaid)

“Redundancy” and “counter balances” are built into the criteria, which compensate for anomalies that might occur in one or two of the items.

As an example, an area might have a very high percentage growth rate in Per Capita Income Maintenance. This might mean the economy is on decline. However, percentages are funny things and can sometimes be misleading. It is much easier for an area with a low basis to have high percentage increases than an area with a high basis.

The Gettysburg, PA MSA had the 29<sup>th</sup> fastest percentage growth rate (1.7%) in Per Capita Income Maintenance from 2011-2016 among the 383 areas. However, its Per Capita Income Maintenance in 2016 was only \$430, ranking 376<sup>th</sup>. While the rate of growth is high, “twice nothing is still nothing.”

The reverse also occurs. The McAllen, TX MSA had the highest Per Capita Income Maintenance (\$1,642) among the 383 metropolitan areas, but its five-year growth rate was slow, ranking 295<sup>th</sup>.

Of course, there are the extremes. The Ames, IA MSA ranked 356<sup>th</sup> in growth rate (a good thing) and had the 3<sup>rd</sup> lowest Per Capita Income Maintenance (another good thing). The opposite and worst situation is Monroe, LA MSA. It had the fastest growth rate and the 2<sup>nd</sup> highest Per Capita Income Maintenance.

If only these criteria are used, the MSA’s would be ranked in the following order: Ames, Gettysburg, McAllen, and Monroe.

POLICOM is also aware of anomalies in labor data. It has found economies, which are on decline, sometimes have a very high growth rate in the number of people employed in Retail Trade. Retail is a reactive industry, which grows and declines in direct proportion to the condition of the economy.

So how can retail jobs grow in a declining economy? It is because labor data counts full and part-time jobs all as “jobs.” This means two part-time jobs are counted as two jobs in the data.

When an area is in decline, retailers switch from full-time workers to part-time workers. A small retailer might have four full time workers. If the retailer lays-off two full-time people but hires three part-timers to replace them, there is a statistical gain in the labor data of one job. The retailer now has five workers, in the data, which is a 25% increase from when there were four full-timers.

To counter balance or compensate, the total earnings and wages are included. Under the above scenario, both earnings and wages will decline; properly adjusting downward the area in the rankings.

#### **Time Periods:**

The average annual increase is calculated for each of the items for three periods.

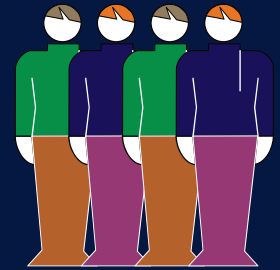
**Last five years: 2013-2017 – Weighted once.**

**Last ten years: 2008-2017 – Weighted twice.**

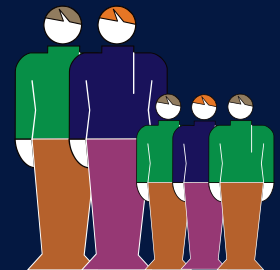
**Previous Ten Years: 2001-2007 – Weighted once (This is a six-year history. In previous years, a ten-year history was used).**

The percentage increases are adjusted mathematically for consistency.

**Four full time jobs**



**If two full-time workers are replaced by three part-time workers ...**



**there is a 25% increase in employment.**

The growth rates are then ranked. The rankings are totaled. The areas are then ranked for economic strength based on their total overall score.

### Consistency of Growth:

Simply identifying the areas that have the fastest or slowest growth rates is insufficient when trying to determine the character of a local economy. The rate, consistency, or stability of the growth is equally important.

Areas with unstable, boom and bust economies are difficult places to conduct business. Residents of these areas are subject to economic uncertainty and stress.

A merchant may lease extra floor space following three or four great years, only to go bankrupt after a subsequent economic decline. Residents might make long term financial commitments based upon rapid increases in earnings and employment, only to lose everything due to a sudden downturn causing massive layoffs.

To better understand the nature of economic stability, we will examine the consistency of the construction industry for three areas, which had the same average annual percentage increase.

The first graph depicts a Mythical Area, which had an average annual percentage increase in Construction Employment of 1.1% from 2007 through 2016.

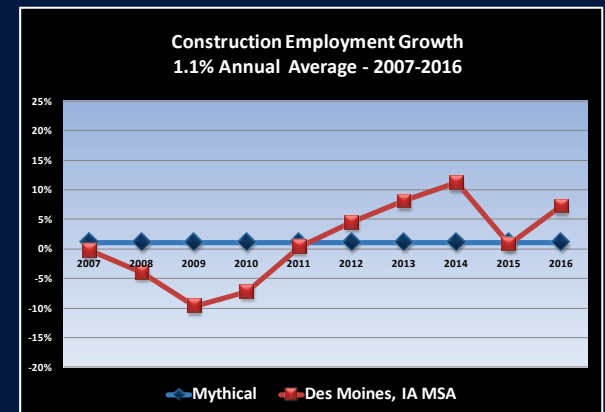
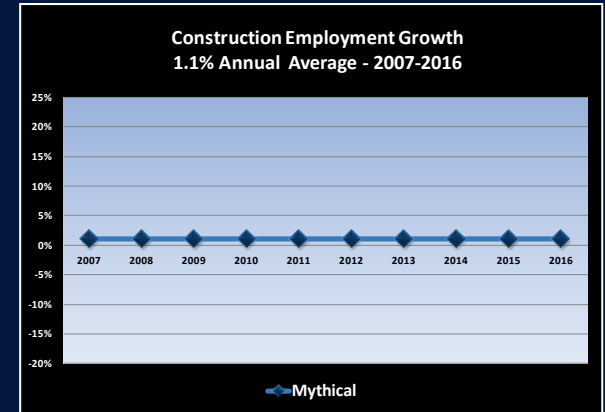
Mythical Area had a 1.1% increase from 2007 to 2008. From 2008 to 2009, it again had a 1.1% increase. Each year, the area increased exactly 1.1%. This means construction employers every year increased the number of people they employed by 1.1%.

As a result, by averaging the ten-year history, the Mythical Area obviously had a 1.1 average annual increase (AAI). The annual deviation from the previous year is 0%.

Most importantly, the area had perfect consistency as depicted by the straight horizontal line on the graph. The flow of money into the area, which supports this industry, grew in an absolutely consistent manner. This is a perfect situation. However, this is mythical, not reality.

Let us examine the economic stability of the Des Moines, IA MSA for the same element. Des Moines, during the same ten years had an AAI in Construction Jobs of 1.1%. This rate of growth ranked 20th among the 383 metropolitan areas for the ten-year period.

The graph shows the percentage increase or decline each year. You can see the rate of growth is not absolutely stable.





While over the ten years it averages 1.1%, there are obvious fluctuations year by year. In 2009 there was a decline of 9.7% while in 2014 construction employment grew by 11.2%.

For the ten years, rate of growth is not nearly as stable as the Mythical Area. The growth line is not straight but goes up and down. The average deviation from the previous year is 3.7%.

While the rate of growth of construction jobs for Des Moines is not absolutely consistent, it is considerably more stable than the Morgantown, WV metropolitan area.

As with Des Moines and the Mythical Area, Morgantown had an average annual increase of 1.1% over the ten years. As you can see in the graph, the rate of growth was extremely volatile.

In 2007, Morgantown had a decline of 3.9% while the next year a gain of 21.3%. In 2010, there was a loss of 17%, but once again it gained 10.2% the next year.

Yes, the average of all of these years is 1.1%. How it happened is considerably different from Des Moines as its average deviation from the previous year was 10.6%.

Obviously, simply relying upon economic growth percentages is not sufficient in order to determine the character of a local economy. Economic stability should be considered.

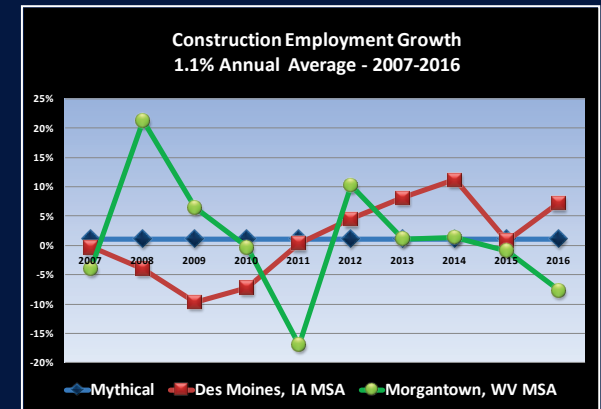
To measure economic stability, the difference or deviation in each successive year's percentage of growth is calculated (absolute number) and averaged, creating the Average Deviation from Previous Year (DEV).

To determine the measurable consistency of growth, the DEV is subtracted from the AAI. This number is used for POLICOM's economic strength rankings. Inconsistent economies are ranked lower than consistent economies.

The following are the economic strength rankings for the 383 Metropolitan Statistical Areas and the 551 Micropolitan Statistical Areas. This is the 16<sup>th</sup> year POLICOM has ranked the areas using similar methodology.

**POLICOM creates the economic strength rankings for its internal research purposes. The publication of the economic strength rankings by POLICOM is the result of “popular demand.” Reliance upon the rankings for any purpose is solely at the discretion of the reader and POLICOM assumes no liability.**

**PREVIOUS YEAR’S RANKINGS ARE “SOMEWHAT COMPARABLE” INSTEAD OF BEING “COMPARABLE” AS THE TIME SERIES FOR THE 2019 RANKINGS IS SHORTER THAN PREVIOUS YEARS.**





383 Metropolitan Areas	2019	2018	2017	2016	2015	2014	2013	2012	2011	2010	383 Metropolitan Areas	2019	2018	2017	2016	2015	2014	2013	2012	2011	2010
Nashville-Davidson-Murfreesboro-Franklin, TN (MSA)	1	4	10	10	7	5	3	4	8	13	Abilene, TX (MSA)	308	257	199	242	271	313	305	332	317	332
Seattle-Tacoma-Bellevue, WA (MSA)	2	3	13	1	2	4	5	3	3	1	Akron, OH (MSA)	120	137	107	111	128	131	150	182	191	150
Austin-Round Rock, TX (MSA)	3	1	1	2	3	2	4	5	4	12	Albany, GA (MSA)	370	370	377	348	350	334	320	309	288	307
San Jose-Sunnyvale-Santa Clara, CA (MSA)	4	5	7	25	58	133	132	97	86	71	Albany, OR (MSA)	253	284	330	363	371	372	na	na	na	na
Napa, CA (MSA)	5	2	3	23	50	66	52	46	21	32	Albany-Schenectady-Troy, NY (MSA)	57	22	27	17	34	25	38	55	68	92
Salt Lake City, UT (MSA)	6	8	29	3	9	17	12	6	2	6	Albuquerque, NM (MSA)	288	316	249	200	144	130	99	87	95	111
San Diego-Carlsbad, CA (MSA)	7	14	5	13	27	31	20	20	14	8	Alexandria, LA (MSA)	181	183	132	169	160	147	151	139	149	174
Indianapolis-Carmel-Anderson, IN (MSA)	8	6	15	40	49	29	18	27	27	26	Allentown-Bethlehem-Easton, PA-NJ (MSA)	86	72	65	70	30	48	46	32	50	79
Raleigh, NC (MSA)	9	9	42	21	14	37	30	18	22	15	Altoona, PA (MSA)	223	214	206	243	207	193	206	239	242	315
Atlanta-Sandy Springs-Roswell, GA (MSA)	10	15	20	48	61	35	29	22	18	18	Amarillo, TX (MSA)	213	151	105	90	127	137	154	134	156	170
Portland-Vancouver-Hillsboro, OR-WA (MSA)	11	53	66	38	41	36	45	51	25	24	Ames, IA (MSA)	230	212	219	198	177	151	135	149	125	143
Madison, WI (MSA)	12	13	12	16	16	16	6	7	12	9	Anchorage, AK (MSA)	88	85	25	31	43	38	53	37	96	154
Des Moines-West Des Moines, IA (MSA)	13	11	14	14	4	1	2	2	6	7	Ann Arbor, MI (MSA)	133	122	150	157	172	169	146	154	160	165
San Luis Obispo-Paso Robles-Arroyo Grande, CA (MSA)	14	17	19	47	63	98	85	75	41	49	Anniston-Oxford-Jacksonville, AL (MSA)	372	379	379	374	364	355	334	335	348	331
Sacramento-Roseville-Arden-Arcade, CA (MSA)	15	45	72	67	64	61	55	45	19	5	Appleton, WI (MSA)	100	89	138	171	156	126	124	117	97	68
Washington-Arlington-Alexandria, DC-VA-MD-WV (MSA)	16	20	18	9	1	3	1	1	1	2	Asheville, NC (MSA)	227	262	301	336	334	303	283	279	259	227
Sioux Falls, SD (MSA)	17	26	32	24	8	15	9	9	10	21	Athens-Clarke County, GA (MSA)	184	171	234	251	263	243	267	264	241	256
Huntsville, AL (MSA)	18	34	38	35	23	10	19	16	52	91	Atlanta-Sandy Springs-Roswell, GA (MSA)	10	15	20	48	61	35	29	22	18	18
San Francisco-Oakland-Hayward, CA (MSA)	19	19	2	28	36	55	73	69	67	51	Atlantic City-Hammonton, NJ (MSA)	272	286	257	218	204	168	168	179	189	177
Dallas-Fort Worth-Arlington, TX (MSA)	20	7	4	4	13	18	14	14	11	10	Auburn-Opelika, AL (MSA)	164	211	271	269	227	259	257	270	289	281
Vallejo-Fairfield, CA (MSA)	21	27	39	73	97	106	102	106	62	35	Augusta-Richmond County, GA-SC (MSA)	147	158	187	193	170	139	157	169	172	203
Columbus, OH (MSA)	22	16	21	11	11	24	22	33	49	38	Austin-Round Rock, TX (MSA)	3	1	1	2	3	2	4	5	4	12

<b>383 Metropolitan Areas</b>	<b>2019</b>	<b>2018</b>	<b>2017</b>	<b>2016</b>	<b>2015</b>	<b>2014</b>	<b>2013</b>	<b>2012</b>	<b>2011</b>	<b>2010</b>	<b>383 Metropolitan Areas</b>	<b>2019</b>	<b>2018</b>	<b>2017</b>	<b>2016</b>	<b>2015</b>	<b>2014</b>	<b>2013</b>	<b>2012</b>	<b>2011</b>	<b>2010</b>
Baltimore-Columbia-Towson, MD (MSA)	23	33	23	15	22	12	16	23	32	56	Bakersfield, CA (MSA)	122	120	62	50	67	87	109	116	89	86
Olympia-Tumwater, WA (MSA)	24	37	68	87	81	50	25	11	7	14	Baltimore-Columbia-Towson, MD (MSA)	23	33	23	15	22	12	16	23	32	56
Fargo, ND-MN (MSA)	25	21	8	5	17	7	15	19	23	25	Bangor, ME (MSA)	297	291	298	262	245	208	243	229	245	244
Santa Rosa, CA (MSA)	26	18	49	89	130	150	126	86	47	39	Barnstable Town, MA (MSA)	84	92	94	127	133	158	169	164	215	209
Iowa City, IA (MSA)	27	36	36	54	38	52	68	102	122	138	Baton Rouge, LA (MSA)	53	63	30	26	18	14	27	42	63	96
Denver-Aurora-Lakewood, CO (MSA)	28	10	6	7	20	23	24	24	9	3	Battle Creek, MI (MSA)	292	317	344	311	303	309	266	249	253	291
Boston-Cambridge-Newton, MA-NH (MSA)	29	29	16	19	33	20	23	38	55	58	Bay City, MI (MSA)	374	375	376	366	365	359	357	360	359	361
Lancaster, PA (MSA)	30	42	89	100	121	115	138	144	139	156	Beaumont-Port Arthur, TX (MSA)	313	275	213	180	190	153	182	175	212	264
Charleston-North Charleston, SC (MSA)	31	54	69	55	32	42	58	71	71	77	Beckley, WV (MSA)	383	383	382	345	291	283	na	na	na	na
Los Angeles-Long Beach-Anaheim, CA (MSA)	32	59	71	84	105	102	113	105	78	60	Bellingham, WA (MSA)	51	84	103	95	80	79	75	65	46	42
San Antonio-New Braunfels, TX (MSA)	33	12	17	8	6	6	7	10	15	29	Bend-Redmond, OR (MSA)	77	128	179	227	265	230	171	110	73	43
Charlotte-Concord-Gastonia, NC-SC (MSA)	34	58	56	39	15	32	21	15	17	11	Billings, MT (MSA)	87	55	97	128	120	96	79	62	51	83
Minneapolis-St. Paul-Bloomington, MN-WI (MSA)	35	28	46	37	60	71	57	64	38	31	Binghamton, NY (MSA)	298	289	252	231	224	223	259	273	296	327
Honolulu, HI (MSA)	36	50	37	58	66	41	49	54	59	72	Birmingham-Hoover, AL (MSA)	115	91	86	96	72	64	40	29	28	20
Fort Collins, CO (MSA)	37	31	44	92	116	148	162	143	116	103	Bismarck, ND (MSA)	52	23	9	32	19	63	67	79	100	145
Houston-The Woodlands-Sugar Land, TX (MSA)	38	24	11	6	10	11	17	12	5	4	Blacksburg-Christiansburg-Radford, VA (MSA)	265	249	240	239	208	257	286	278	301	333
Boise City, ID (MSA)	39	56	82	126	161	177	128	88	58	37	Bloomington, IL (MSA)	209	169	152	135	93	108	125	131	153	159
Santa Maria-Santa Barbara, CA (MSA)	40	61	53	97	87	83	92	114	83	69	Bloomington, IN (MSA)	229	269	312	299	268	270	291	302	311	345
Provo-Orem, UT (MSA)	41	48	113	101	152	180	186	156	134	129	Bloomsburg-Berwick, PA (MSA)	174	205	170	163	135	179	na	na	na	na
Oxnard-Thousand Oaks-Ventura, CA (MSA)	42	41	64	94	57	74	76	60	33	30	Boise City, ID (MSA)	39	56	82	126	161	177	128	88	58	37
Manchester-Nashua, NH (MSA)	43	44	41	20	51	22	26	40	61	44	Boston-Cambridge-Newton, MA-NH (MSA)	29	29	16	19	33	20	23	38	55	58
Richmond, VA (MSA)	44	30	22	56	47	62	44	35	36	63	Boulder, CO (MSA)	63	43	40	75	95	122	111	108	87	87
Burlington-South Burlington, VT (MSA)	45	32	57	34	26	44	61	83	110	82	Bowling Green, KY (MSA)	180	213	163	182	230	255	251	274	260	254

383 Metropolitan Areas	2019	2018	2017	2016	2015	2014	2013	2012	2011	2010	383 Metropolitan Areas	2019	2018	2017	2016	2015	2014	2013	2012	2011	2010
Knoxville, TN (MSA)	46	73	129	113	94	70	56	66	98	81	Bremerton-Silverdale, WA (MSA)	91	130	162	175	148	107	82	61	30	64
Portland-South Portland, ME (MSA)	47	67	90	124	106	81	95	132	178	152	Bridgeport-Stamford-Norwalk, CT (MSA)	142	100	52	69	88	112	96	80	70	54
Charlottesville, VA (MSA)	48	79	61	29	21	34	37	28	29	33	Brownsville-Harlingen, TX (MSA)	304	266	244	265	241	246	204	221	240	253
Lake Charles, LA (MSA)	49	99	145	118	171	198	228	213	198	222	Brunswick, GA (MSA)	339	363	368	361	349	335	313	296	268	272
California-Lexington Park, MD (MSA)	50	86	63	45	12	19	na	na	na	na	Buffalo-Cheektowaga-Niagara Falls, NY (MSA)	111	95	91	78	71	93	129	157	190	219
Bellingham, WA (MSA)	51	84	103	95	80	79	75	65	46	42	Burlington, NC (MSA)	358	354	364	376	375	374	350	352	350	349
Bismarck, ND (MSA)	52	23	9	32	19	63	67	79	100	145	Burlington-South Burlington, VT (MSA)	45	32	57	34	26	44	61	83	110	82
Baton Rouge, LA (MSA)	53	63	30	26	18	14	27	42	63	96	California-Lexington Park, MD (MSA)	50	86	63	45	12	19	na	na	na	na
Greeley, CO (MSA)	54	46	60	72	104	141	130	130	120	88	Canton-Massillon, OH (MSA)	315	314	299	301	322	343	336	346	330	297
Philadelphia-Camden-Wilmington, PA-NJ-DE-MD (MSA)	55	25	28	22	25	33	31	44	39	61	Cape Coral-Fort Myers, FL (MSA)	107	159	176	181	229	278	224	183	166	108
Fayetteville-Springdale-Rogers, AR-MO (MSA)	56	35	47	41	45	58	83	76	105	100	Cape Girardeau, MO-IL (MSA)	275	240	248	240	210	218	214	219	221	188
Albany-Schenectady-Troy, NY (MSA)	57	22	27	17	34	25	38	55	68	92	Carbondale-Marion, IL (MSA)	309	282	303	223	200	209	na	na	na	na
Kansas City, MO-KS (MSA)	58	49	24	18	28	9	10	8	16	17	Carson City, NV (MSA)	279	298	273	260	233	273	230	195	170	121
Green Bay, WI (MSA)	59	51	48	42	56	47	43	67	75	48	Casper, WY (MSA)	130	127	78	65	86	113	141	133	128	125
Cincinnati, OH-KY-IN (MSA)	60	38	35	44	48	21	34	41	66	50	Cedar Rapids, IA (MSA)	99	115	74	51	53	30	54	89	93	78
Columbia, SC (MSA)	61	75	75	112	117	110	134	126	104	115	Chambersburg-Waynesboro, PA (MSA)	194	227	183	214	275	277	na	na	na	na
Kennewick-Richland, WA (MSA)	62	82	80	59	37	26	11	13	35	70	Champaign-Urbana, IL (MSA)	123	74	110	188	213	245	272	300	328	316
Boulder, CO (MSA)	63	43	40	75	95	122	111	108	87	87	Charleston, WV (MSA)	299	294	221	196	162	132	101	99	80	113
Phoenix-Mesa-Scottsdale, AZ (MSA)	64	78	85	80	77	77	62	36	20	16	Charleston-North Charleston, SC (MSA)	31	54	69	55	32	42	58	71	71	77
Durham-Chapel Hill, NC (MSA)	65	65	83	116	100	69	47	48	44	59	Charlotte-Concord-Gastonia, NC-SC (MSA)	34	58	56	39	15	32	21	15	17	11
Santa Cruz-Watsonville, CA (MSA)	66	57	109	114	147	206	183	151	141	133	Charlottesville, VA (MSA)	48	79	61	29	21	34	37	28	29	33
Hartford-West Hartford-East Hartford, CT (MSA)	67	66	31	33	44	39	36	26	45	36	Chattanooga, TN-GA (MSA)	117	143	136	156	143	118	112	113	118	99
Orlando-Kissimmee-Sanford, FL (MSA)	68	102	96	123	141	117	70	52	31	27	Cheyenne, WY (MSA)	136	105	81	68	62	45	35	53	74	119
Riverside-San Bernardino-Ontario, CA (MSA)	69	153	169	148	176	145	116	82	40	28	Chicago-Naperville-Elgin, IL-IN-WI (MSA)	76	40	43	63	75	51	71	63	48	45

<b>383 Metropolitan Areas</b>	<b>2019</b>	<b>2018</b>	<b>2017</b>	<b>2016</b>	<b>2015</b>	<b>2014</b>	<b>2013</b>	<b>2012</b>	<b>2011</b>	<b>2010</b>	<b>383 Metropolitan Areas</b>	<b>2019</b>	<b>2018</b>	<b>2017</b>	<b>2016</b>	<b>2015</b>	<b>2014</b>	<b>2013</b>	<b>2012</b>	<b>2011</b>	<b>2010</b>
New York-Newark-Jersey City, NY-NJ-PA (MSA)	70	39	77	27	42	27	32	43	64	62	Chico, CA (MSA)	157	174	211	236	279	302	273	250	211	200
Grand Rapids-Wyoming, MI (MSA)	71	64	88	110	146	162	184	155	129	97	Cincinnati, OH-KY-IN (MSA)	60	38	35	44	48	21	34	41	66	50
Salinas, CA (MSA)	72	98	142	162	185	199	176	147	119	107	Clarksville, TN-KY (MSA)	166	203	191	146	131	121	105	145	177	197
Miami-Fort Lauderdale-West Palm Beach, FL (MSA)	73	97	135	76	112	114	100	84	77	53	Cleveland, TN (MSA)	314	264	196	165	203	205	250	292	314	309
Stockton-Lodi, CA (MSA)	74	106	154	186	216	238	198	170	123	93	Cleveland-Elyria, OH (MSA)	125	135	146	130	119	146	179	185	175	141
Missoula, MT (MSA)	75	144	188	226	199	166	172	119	91	74	Coeur d'Alene, ID (MSA)	150	188	258	310	317	307	238	189	135	124
Chicago-Naperville-Elgin, IL-IN-WI (MSA)	76	40	43	63	75	51	71	63	48	45	College Station-Bryan, TX (MSA)	93	77	59	74	107	91	104	122	157	194
Bend-Redmond, OR (MSA)	77	128	179	227	265	230	171	110	73	43	Colorado Springs, CO (MSA)	79	52	54	99	83	67	41	39	24	40
Jacksonville, FL (MSA)	78	112	157	147	157	143	115	92	69	76	Columbia, MO (MSA)	105	90	73	82	84	90	80	111	136	171
Colorado Springs, CO (MSA)	79	52	54	99	83	67	41	39	24	40	Columbia, SC (MSA)	61	75	75	112	117	110	134	126	104	115
Savannah, GA (MSA)	80	103	102	122	123	135	108	91	72	94	Columbus, GA-AL (MSA)	328	303	227	189	150	157	175	166	180	216
Omaha-Council Bluffs, NE-IA (MSA)	81	47	58	12	5	8	13	17	13	23	Columbus, IN (MSA)	178	160	155	192	236	234	264	282	262	228
Pittsburgh, PA (MSA)	82	62	34	36	24	46	51	58	82	73	Columbus, OH (MSA)	22	16	21	11	11	24	22	33	49	38
Oshkosh-Neenah, WI (MSA)	83	76	128	105	102	104	110	135	161	132	Corpus Christi, TX (MSA)	140	88	76	49	59	68	48	49	53	80
Barnstable Town, MA (MSA)	84	92	94	127	133	158	169	164	215	209	Corvallis, OR (MSA)	148	185	233	249	231	194	197	217	238	270
Crestview-Fort Walton Beach-Destin, FL (MSA)	85	131	160	185	179	163	118	115	111	144	Crestview-Fort Walton Beach-Destin, FL (MSA)	85	131	160	185	179	163	118	115	111	144
Allentown-Bethlehem-Easton, PA-NJ (MSA)	86	72	65	70	30	48	46	32	50	79	Cumberland, MD-WV (MSA)	362	356	337	290	237	244	269	290	303	326
Billings, MT (MSA)	87	55	97	128	120	96	79	62	51	83	Dallas-Fort Worth-Arlington, TX (MSA)	20	7	4	4	13	18	14	14	11	10
Anchorage, AK (MSA)	88	85	25	31	43	38	53	37	96	154	Dalton, GA (MSA)	263	277	341	316	345	345	332	306	315	286
Milwaukee-Waukesha-West Allis, WI (MSA)	89	71	50	93	82	53	66	70	94	66	Danville, IL (MSA)	377	376	378	378	381	381	366	366	366	366
Tampa-St. Petersburg-Clearwater, FL (MSA)	90	93	112	115	132	116	127	95	57	85	Daphne-Fairhope-Foley, AL (MSA)	144	176	172	161	173	167	na	na	na	na
Bremerton-Silverdale, WA (MSA)	91	130	162	175	148	107	82	61	30	64	Davenport-Moline-Rock Island, IA-IL (MSA)	177	209	156	137	111	82	106	153	147	178
Ogden-Clearfield, UT (MSA)	92	113	114	106	129	111	84	56	79	110	Dayton, OH (MSA)	191	180	207	207	205	217	252	271	295	265
College Station-Bryan, TX (MSA)	93	77	59	74	107	91	104	122	157	194	Decatur, AL (MSA)	371	366	362	341	351	350	346	340	312	295

383 Metropolitan Areas	2019	2018	2017	2016	2015	2014	2013	2012	2011	2010	383 Metropolitan Areas	2019	2018	2017	2016	2015	2014	2013	2012	2011	2010
Harrisburg-Carlisle, PA (MSA)	94	60	33	43	31	49	42	74	85	118	Decatur, IL (MSA)	287	293	250	279	288	240	262	263	237	234
Norwich-New London, CT (MSA)	95	148	133	107	89	72	50	47	43	34	Deltona-Daytona Beach-Ormond Beach, FL (MSA)	284	296	347	337	355	353	344	311	280	258
Mount Vernon-Anacortes, WA (MSA)	96	149	214	213	240	195	131	90	37	47	Denver-Aurora-Lakewood, CO (MSA)	28	10	6	7	20	23	24	24	9	3
Winchester, VA-WV (MSA)	97	107	101	109	99	155	121	121	138	147	Des Moines-West Des Moines, IA (MSA)	13	11	14	14	4	1	2	2	6	7
New Haven-Milford, CT (MSA)	98	94	51	85	70	75	72	57	65	55	Detroit-Warren-Dearborn, MI (MSA)	119	114	134	150	188	190	200	215	181	151
Cedar Rapids, IA (MSA)	99	115	74	51	53	30	54	89	93	78	Dothan, AL (MSA)	342	340	317	285	255	279	289	291	318	285
Appleton, WI (MSA)	100	89	138	171	156	126	124	117	97	68	Dover, DE (MSA)	277	244	200	195	154	159	139	158	168	182
Oklahoma City, OK (MSA)	101	68	26	30	68	76	103	85	99	75	Dubuque, IA (MSA)	250	235	235	190	158	144	158	196	227	238
Lexington-Fayette, KY (MSA)	102	81	99	64	79	86	65	73	102	67	Duluth, MN-WI (MSA)	333	320	272	246	285	297	288	308	284	259
Trenton, NJ (MSA)	103	70	87	77	55	56	39	34	34	19	Durham-Chapel Hill, NC (MSA)	65	65	83	116	100	69	47	48	44	59
Lincoln, NE (MSA)	104	69	67	88	91	80	74	94	108	130	East Stroudsburg, PA (MSA)	273	301	316	338	335	289	na	na	na	na
Columbia, MO (MSA)	105	90	73	82	84	90	80	111	136	171	Eau Claire, WI (MSA)	127	126	79	91	74	88	114	142	187	185
Sheboygan, WI (MSA)	106	134	192	191	191	164	190	174	154	123	El Centro, CA (MSA)	311	338	328	329	336	336	287	288	270	300
Cape Coral-Fort Myers, FL (MSA)	107	159	176	181	229	278	224	183	166	108	El Paso, TX (MSA)	244	219	174	132	110	101	93	120	158	186
Idaho Falls, ID (MSA)	108	87	118	140	178	197	237	236	225	210	Elizabethtown-Fort Knox, KY (MSA)	291	332	343	304	242	260	207	253	266	287
Louisville/Jefferson County, KY-IN (MSA)	109	80	84	134	124	97	90	81	76	102	Elkhart-Goshen, IN (MSA)	197	224	282	326	306	349	330	341	313	282
Modesto, CA (MSA)	110	96	148	183	221	242	229	226	193	148	Elmira, NY (MSA)	341	312	306	248	281	287	303	314	338	322
Buffalo-Cheektowaga-Niagara Falls, NY (MSA)	111	95	91	78	71	93	129	157	190	219	Enid, OK (MSA)	266	184	166	na	na	na	na	na	na	na
Killeen-Temple, TX (MSA)	112	116	115	61	40	13	8	30	60	89	Erie, PA (MSA)	355	345	323	334	339	338	300	321	309	317
St. Louis, MO-IL (MSA)	113	101	45	104	73	94	87	93	127	101	Eugene, OR (MSA)	206	245	278	278	316	280	295	265	213	175
Worcester, MA-CT (MSA)	114	123	106	129	90	152	117	125	151	160	Evansville, IN-KY (MSA)	259	243	208	206	211	196	178	191	176	168
Birmingham-Hoover, AL (MSA)	115	91	86	96	72	64	40	29	28	20	Fairbanks, AK (MSA)	171	186	120	81	54	54	86	96	130	155
Fresno, CA (MSA)	116	152	161	153	196	207	213	209	171	146	Fargo, ND-MN (MSA)	25	21	8	5	17	7	15	19	23	25
Chattanooga, TN-GA (MSA)	117	143	136	156	143	118	112	113	118	99	Farmington, NM (MSA)	335	358	336	328	320	274	245	212	184	220
Gainesville, GA (MSA)	118	129	153	187	238	216	187	162	131	105	Fayetteville, NC (MSA)	243	220	171	133	85	92	59	59	92	122
Detroit-Warren-Dearborn, MI (MSA)	119	114	134	150	188	190	200	215	181	151	Fayetteville-Springdale-Rogers, AR-MO (MSA)	56	35	47	41	45	58	83	76	105	100
Akron, OH (MSA)	120	137	107	111	128	131	150	182	191	150	Flagstaff, AZ (MSA)	202	278	245	263	299	286	232	203	183	187
Yuba City, CA (MSA)	121	181	237	274	246	253	227	200	206	173	Flint, MI (MSA)	356	361	369	377	376	379	364	363	357	358
Bakersfield, CA (MSA)	122	120	62	50	67	87	109	116	89	86	Florence, SC (MSA)	336	327	332	314	302	323	312	307	297	298

<b>383 Metropolitan Areas</b>	<b>2019</b>	<b>2018</b>	<b>2017</b>	<b>2016</b>	<b>2015</b>	<b>2014</b>	<b>2013</b>	<b>2012</b>	<b>2011</b>	<b>2010</b>	<b>383 Metropolitan Areas</b>	<b>2019</b>	<b>2018</b>	<b>2017</b>	<b>2016</b>	<b>2015</b>	<b>2014</b>	<b>2013</b>	<b>2012</b>	<b>2011</b>	<b>2010</b>
Champaign-Urbana, IL (MSA)	123	74	110	188	213	245	272	300	328	316	Florence-Muscle Shoals, AL (MSA)	329	339	318	273	259	276	302	297	306	312
Morgantown, WV (MSA)	124	104	130	62	35	57	69	68	101	131	Fond du Lac, WI (MSA)	215	202	260	298	289	239	188	225	200	163
Cleveland-Elyria, OH (MSA)	125	135	146	130	119	146	179	185	175	141	Fort Collins, CO (MSA)	37	31	44	92	116	148	162	143	116	103
Spokane-Spokane Valley, WA (MSA)	126	161	182	170	187	156	133	109	115	109	Fort Smith, AR-OK (MSA)	367	372	372	346	358	347	337	334	316	284
Eau Claire, WI (MSA)	127	126	79	91	74	88	114	142	187	185	Fort Wayne, IN (MSA)	188	194	195	222	262	241	239	251	250	221
State College, PA (MSA)	128	111	92	53	29	73	89	107	133	172	Fresno, CA (MSA)	116	152	161	153	196	207	213	209	171	146
Tyler, TX (MSA)	129	83	70	131	167	202	194	198	169	137	Gadsden, AL (MSA)	365	367	371	362	343	324	333	339	352	352
Casper, WY (MSA)	130	127	78	65	86	113	141	133	128	125	Gainesville, FL (MSA)	203	182	212	229	235	267	233	210	192	231
Waco, TX (MSA)	131	110	122	179	153	154	140	171	202	239	Gainesville, GA (MSA)	118	129	153	187	238	216	187	162	131	105
Rapid City, SD (MSA)	132	118	131	152	137	100	122	136	137	167	Gettysburg, PA (MSA)	242	239	259	244	298	293	na	na	na	na
Ann Arbor, MI (MSA)	133	122	150	157	172	169	146	154	160	165	Glens Falls, NY (MSA)	208	234	222	174	183	225	253	272	278	303
Naples-Immokalee-Marco Island, FL (MSA)	134	108	93	154	197	222	208	188	148	114	Goldsboro, NC (MSA)	379	355	363	349	330	301	277	320	337	321
Logan, UT-ID (MSA)	135	166	223	284	283	292	242	234	264	226	Grand Forks, ND-MN (MSA)	169	164	165	210	261	219	234	248	302	334
Cheyenne, WY (MSA)	136	105	81	68	62	45	35	53	74	119	Grand Island, NE (MSA)	262	228	276	237	225	235	na	na	na	na
Kahului-Wailuku-Lahaina, HI (MSA)	137	142	217	247	218	212	na	na	na	na	Grand Junction, CO (MSA)	310	285	325	295	318	263	189	148	103	84
Memphis, TN-MS-AR (MSA)	138	136	144	139	108	85	64	50	56	46	Grand Rapids-Wyoming, MI (MSA)	71	64	88	110	146	162	184	155	129	97
Reno, NV (MSA)	139	197	242	245	223	201	170	138	90	41	Grants Pass, OR (MSA)	249	309	359	375	374	367	na	na	na	na
Corpus Christi, TX (MSA)	140	88	76	49	59	68	48	49	53	80	Great Falls, MT (MSA)	185	165	151	178	149	109	120	123	173	202
Springfield, MA (MSA)	141	139	116	117	113	140	156	161	145	183	Greeley, CO (MSA)	54	46	60	72	104	141	130	130	120	88
Bridgeport-Stamford-Norwalk, CT (MSA)	142	100	52	69	88	112	96	80	70	54	Green Bay, WI (MSA)	59	51	48	42	56	47	43	67	75	48
Hilton Head Island-Bluffton-Beaufort, SC (MSA)	143	141	149	155	194	214	na	na	na	na	Greensboro-High Point, NC (MSA)	281	255	274	259	243	226	215	190	159	134
Daphne-Fairhope-Foley, AL (MSA)	144	176	172	161	173	167	na	na	na	na	Greenville, NC (MSA)	235	238	247	283	256	221	236	261	254	289
Providence-Warwick, RI-MA (MSA)	145	109	55	86	52	84	88	104	109	98	Greenville-Anderson-Mauldin, SC (MSA)	196	163	167	172	217	224	223	223	194	161
Odessa, TX (MSA)	146	156	100	57	126	165	225	205	214	218	Gulfport-Biloxi-Pascagoula, MS (MSA)	349	360	352	288	239	264	235	232	267	302
Augusta-Richmond County, GA-SC (MSA)	147	158	187	193	170	139	157	169	172	203	Hagerstown-Martinsburg, MD-WV (MSA)	172	179	175	159	115	128	153	137	117	95
Corvallis, OR (MSA)	148	185	233	249	231	194	197	217	238	270	Hammond, LA (MSA)	348	365	305	241	273	269	na	na	na	na
Rochester, MN (MSA)	149	119	143	184	212	187	145	101	114	128	Hanford-Corcoran, CA (MSA)	282	318	313	320	304	315	271	244	226	191
Coeur d'Alene, ID (MSA)	150	188	258	310	317	307	238	189	135	124	Harrisburg-Carlisle, PA (MSA)	94	60	33	43	31	49	42	74	85	118



<b>383 Metropolitan Areas</b>	<b>2019</b>	<b>2018</b>	<b>2017</b>	<b>2016</b>	<b>2015</b>	<b>2014</b>	<b>2013</b>	<b>2012</b>	<b>2011</b>	<b>2010</b>	<b>383 Metropolitan Areas</b>	<b>2019</b>	<b>2018</b>	<b>2017</b>	<b>2016</b>	<b>2015</b>	<b>2014</b>	<b>2013</b>	<b>2012</b>	<b>2011</b>	<b>2010</b>
Toledo, OH (MSA)	151	121	193	151	168	178	209	243	276	249	Harrisonburg, VA (MSA)	255	226	197	202	193	203	195	173	201	208
Syracuse, NY (MSA)	152	145	185	102	78	78	107	129	162	195	Hartford-West Hartford-East Hartford, CT (MSA)	67	66	31	33	44	39	36	26	45	36
La Crosse-Onalaska, WI-MN (MSA)	153	125	121	177	138	171	196	214	218	237	Hattiesburg, MS (MSA)	211	175	198	254	226	204	202	241	271	305
Salem, OR (MSA)	154	208	268	220	250	249	281	235	197	212	Hickory-Lenoir-Morganton, NC (MSA)	366	364	373	380	377	375	353	353	356	354
Midland, TX (MSA)	155	140	108	66	98	125	177	167	182	184	Hilton Head Island-Bluffton-Beaufort, SC (MSA)	143	141	149	155	194	214	na	na	na	na
Wilmington, NC (MSA)	156	168	190	136	101	89	97	100	106	112	Hinesville, GA (MSA)	346	343	357	332	310	268	205	216	234	257
Chico, CA (MSA)	157	174	211	236	279	302	273	250	211	200	Homosassa Springs, FL (MSA)	347	347	367	352	352	356	na	na	na	na
Reading, PA (MSA)	158	155	140	158	139	149	123	127	132	140	Honolulu, HI (MSA)	36	50	37	58	66	41	49	54	59	72
Wausau, WI (MSA)	159	162	124	142	145	188	160	150	140	104	Hot Springs, AR (MSA)	317	322	292	325	276	247	279	280	300	324
Virginia Beach-Norfolk-Newport News, VA-NC (MSA)	160	124	104	83	39	40	28	25	42	90	Houma-Thibodaux, LA (MSA)	251	187	95	52	96	127	165	187	248	260
Lebanon, PA (MSA)	161	178	147	197	195	191	216	228	255	283	Houston-The Woodlands-Sugar Land, TX (MSA)	38	24	11	6	10	11	17	12	5	4
Lubbock, TX (MSA)	162	132	180	145	166	160	193	240	272	301	Huntington-Ashland, WV-KY-OH (MSA)	321	300	228	232	201	227	265	255	269	277
Wenatchee, WA (MSA)	163	191	202	264	314	333	274	259	261	269	Huntsville, AL (MSA)	18	34	38	35	23	10	19	16	52	91
Auburn-Opelika, AL (MSA)	164	211	271	269	227	259	257	270	289	281	Idaho Falls, ID (MSA)	108	87	118	140	178	197	237	236	225	210
Tulsa, OK (MSA)	165	117	111	79	103	124	137	141	155	142	Indianapolis-Carmel-Anderson, IN (MSA)	8	6	15	40	49	29	18	27	27	26
Clarksville, TN-KY (MSA)	166	203	191	146	131	121	105	145	177	197	Iowa City, IA (MSA)	27	36	36	54	38	52	68	102	122	138
Warner Robins, GA (MSA)	167	170	186	143	118	95	60	78	113	153	Ithaca, NY (MSA)	193	138	159	125	109	136	174	204	231	255
Kalamazoo-Portage, MI (MSA)	168	222	285	230	278	298	297	299	307	279	Jackson, MI (MSA)	327	329	321	358	324	363	342	349	346	336
Grand Forks, ND-MN (MSA)	169	164	165	210	261	219	234	248	302	334	Jackson, MS (MSA)	176	146	125	108	92	65	78	77	81	106
Las Vegas-Henderson-Paradise, NV (MSA)	170	157	181	141	136	103	63	31	54	22	Jackson, TN (MSA)	234	247	288	292	155	192	218	247	235	205
Fairbanks, AK (MSA)	171	186	120	81	54	54	86	96	130	155	Jacksonville, FL (MSA)	78	112	157	147	157	143	115	92	69	76
Hagerstown-Martinsburg, MD-WV (MSA)	172	179	175	159	115	128	153	137	117	95	Jacksonville, NC (MSA)	218	167	194	149	114	99	94	128	164	199
North Port-Sarasota-Bradenton, FL (MSA)	173	210	236	234	260	304	285	266	220	204	Janesville-Beloit, WI (MSA)	318	321	353	333	305	341	339	344	333	311
Bloomsburg-Berwick, PA (MSA)	174	205	170	163	135	179	na	na	na	na	Jefferson City, MO (MSA)	271	229	204	205	182	182	142	172	210	181
Salisbury, MD-DE (MSA)	175	133	141	176	186	229	241	257	229	196	Johnson City, TN (MSA)	293	307	338	307	267	251	256	289	319	304
Jackson, MS (MSA)	176	146	125	108	92	65	78	77	81	106	Johnstown, PA (MSA)	375	373	354	343	338	317	301	322	329	355



383 Metropolitan Areas	2019	2018	2017	2016	2015	2014	2013	2012	2011	2010	383 Metropolitan Areas	2019	2018	2017	2016	2015	2014	2013	2012	2011	2010
Davenport-Moline-Rock Island, IA-IL (MSA)	177	209	156	137	111	82	106	153	147	178	Jonesboro, AR (MSA)	283	246	283	252	292	282	298	315	340	342
Columbus, IN (MSA)	178	160	155	192	236	234	264	282	262	228	Joplin, MO (MSA)	300	281	220	258	244	210	249	246	275	250
Little Rock-North Little Rock-Conway, AR (MSA)	179	147	123	71	46	28	33	21	26	52	Kahului-Wailuku-Lahaina, HI (MSA)	137	142	217	247	218	212	na	na	na	na
Bowling Green, KY (MSA)	180	213	163	182	230	255	251	274	260	254	Kalamazoo-Portage, MI (MSA)	168	222	285	230	278	298	297	299	307	279
Alexandria, LA (MSA)	181	183	132	169	160	147	151	139	149	174	Kankakee, IL (MSA)	361	352	320	354	348	340	331	337	335	319
The Villages, FL (MSA)	182	223	216	166	198	233	na	na	na	na	Kansas City, MO-KS (MSA)	58	49	24	18	28	9	10	8	16	17
Lewiston, ID-WA (MSA)	183	241	309	302	293	290	261	258	246	235	Kennewick-Richland, WA (MSA)	62	82	80	59	37	26	11	13	35	70
Athens-Clarke County, GA (MSA)	184	171	234	251	263	243	267	264	241	256	Killeen-Temple, TX (MSA)	112	116	115	61	40	13	8	30	60	89
Great Falls, MT (MSA)	185	165	151	178	149	109	120	123	173	202	Kingsport-Bristol-Bristol, TN-VA (MSA)	344	337	331	335	337	325	311	295	321	299
St. George, UT (MSA)	186	232	231	253	308	318	278	242	216	180	Kingston, NY (MSA)	232	258	254	293	266	252	280	275	277	246
Yakima, WA (MSA)	187	233	286	261	254	266	217	227	243	278	Knoxville, TN (MSA)	46	73	129	113	94	70	56	66	98	81
Fort Wayne, IN (MSA)	188	194	195	222	262	241	239	251	250	221	Kokomo, IN (MSA)	354	333	340	355	367	376	352	354	354	343
Medford, OR (MSA)	189	242	300	322	301	314	255	211	165	120	La Crosse-Onalaska, WI-MN (MSA)	153	125	121	177	138	171	196	214	218	237
Vineland-Bridgeton, NJ (MSA)	190	172	215	203	164	123	147	168	195	193	Lafayette, LA (MSA)	256	198	98	46	76	59	77	98	107	126
Dayton, OH (MSA)	191	180	207	207	205	217	252	271	295	265	Lafayette-West Lafayette, IN (MSA)	225	218	209	275	321	331	310	304	292	294
Spartanburg, SC (MSA)	192	196	255	221	253	265	282	276	251	251	Lake Charles, LA (MSA)	49	99	145	118	171	198	228	213	198	222
Ithaca, NY (MSA)	193	138	159	125	109	136	174	204	231	255	Lake Havasu City-Kingman, AZ (MSA)	320	346	345	367	368	370	351	330	281	217
Chambersburg-Waynesboro, PA (MSA)	194	227	183	214	275	277	na	na	na	na	Lakeland-Winter Haven, FL (MSA)	268	272	270	286	296	306	284	268	233	267
Rochester, NY (MSA)	195	150	119	60	69	60	81	103	121	135	Lancaster, PA (MSA)	30	42	89	100	121	115	138	144	139	156
Greenville-Anderson-Mauldin, SC (MSA)	196	163	167	172	217	224	223	223	194	161	Lansing-East Lansing, MI (MSA)	236	248	290	306	326	342	319	293	263	225
Elkhart-Goshen, IN (MSA)	197	224	282	326	306	349	330	341	313	282	Laredo, TX (MSA)	368	348	334	296	332	319	276	237	203	166
Myrtle Beach-Conway-North Myrtle Beach, SC-NC (MSA)	198	254	253	297	309	310	324	316	283	241	Las Cruces, NM (MSA)	290	325	311	272	228	236	199	207	239	274
Palm Bay-Melbourne-Titusville, FL (MSA)	199	252	297	313	286	294	246	224	188	169	Las Vegas-Henderson-Paradise, NV (MSA)	170	157	181	141	136	103	63	31	54	22
Lawrence, KS (MSA)	200	221	238	235	234	258	263	254	293	306	Lawrence, KS (MSA)	200	221	238	235	234	258	263	254	293	306
McAllen-Edinburg-Mission, TX (MSA)	201	154	139	120	142	138	144	176	185	213	Lawton, OK (MSA)	307	299	275	224	219	200	159	180	228	288
Flagstaff, AZ (MSA)	202	278	245	263	299	286	232	203	183	187	Lebanon, PA (MSA)	161	178	147	197	195	191	216	228	255	283
Gainesville, FL (MSA)	203	182	212	229	235	267	233	210	192	231	Lewiston, ID-WA (MSA)	183	241	309	302	293	290	261	258	246	235

<b>383 Metropolitan Areas</b>	<b>2019</b>	<b>2018</b>	<b>2017</b>	<b>2016</b>	<b>2015</b>	<b>2014</b>	<b>2013</b>	<b>2012</b>	<b>2011</b>	<b>2010</b>	<b>383 Metropolitan Areas</b>	<b>2019</b>	<b>2018</b>	<b>2017</b>	<b>2016</b>	<b>2015</b>	<b>2014</b>	<b>2013</b>	<b>2012</b>	<b>2011</b>	<b>2010</b>
Manhattan, KS (MSA)	204	193	178	199	180	142	119	160	163	157	Lewiston-Auburn, ME (MSA)	326	304	293	321	282	296	258	277	325	296
Springfield, MO (MSA)	205	192	241	209	220	189	212	206	199	162	Lexington-Fayette, KY (MSA)	102	81	99	64	79	86	65	73	102	67
Eugene, OR (MSA)	206	245	278	278	316	280	295	265	213	175	Lima, OH (MSA)	238	265	289	324	313	326	308	313	322	313
Ocean City, NJ (MSA)	207	206	184	211	151	185	201	220	249	268	Lincoln, NE (MSA)	104	69	67	88	91	80	74	94	108	130
Glens Falls, NY (MSA)	208	234	222	174	183	225	253	272	278	303	Little Rock-North Little Rock-Conway, AR (MSA)	179	147	123	71	46	28	33	21	26	52
Bloomington, IL (MSA)	209	169	152	135	93	108	125	131	153	159	Logan, UT-ID (MSA)	135	166	223	284	283	292	242	234	264	226
Montgomery, AL (MSA)	210	251	205	164	125	105	98	72	84	65	Longview, TX (MSA)	264	201	173	121	159	174	148	118	124	139
Hattiesburg, MS (MSA)	211	175	198	254	226	204	202	241	271	305	Longview, WA (MSA)	240	268	304	228	272	305	304	294	310	290
Twin Falls, ID (MSA)	212	231	na	na	na	na	na	na	na	na	Los Angeles-Long Beach-Anaheim, CA (MSA)	32	59	71	84	105	102	113	105	78	60
Amarillo, TX (MSA)	213	151	105	90	127	137	154	134	156	170	Louisville/Jefferson County, KY-IN (MSA)	109	80	84	134	124	97	90	81	76	102
Watertown-Fort Drum, NY (MSA)	214	189	164	103	65	43	na	na	na	na	Lubbock, TX (MSA)	162	132	180	145	166	160	193	240	272	301
Fond du Lac, WI (MSA)	215	202	260	298	289	239	188	225	200	163	Lynchburg, VA (MSA)	302	323	310	276	251	299	307	312	285	252
Scranton-Wilkes-Barre-Hazleton, PA (MSA)	216	195	127	144	134	134	161	184	152	198	Macon-Bibb County, GA (MSA)	303	274	265	300	325	316	294	286	291	323
Madera, CA (MSA)	217	225	224	266	311	346	314	283	244	240	Madera, CA (MSA)	217	225	224	266	311	346	314	283	244	240
Jacksonville, NC (MSA)	218	167	194	149	114	99	94	128	164	199	Madison, WI (MSA)	12	13	12	16	16	16	6	7	12	9
Panama City, FL (MSA)	219	253	280	268	247	213	164	146	150	192	Manchester-Nashua, NH (MSA)	43	44	41	20	51	22	26	40	61	44
Prescott, AZ (MSA)	220	288	302	359	369	368	345	333	305	248	Manhattan, KS (MSA)	204	193	178	199	180	142	119	160	163	157
York-Hanover, PA (MSA)	221	259	256	217	209	186	191	202	207	215	Mankato-North Mankato, MN (MSA)	269	283	279	317	346	344	315	284	256	201
St. Cloud, MN (MSA)	222	250	232	201	257	285	275	269	282	242	Mansfield, OH (MSA)	376	374	370	365	366	358	362	358	363	359
Altoona, PA (MSA)	223	214	206	243	207	193	206	239	242	315	McAllen-Edinburg-Mission, TX (MSA)	201	154	139	120	142	138	144	176	185	213
New Orleans-Metairie, LA (MSA)	224	177	117	119	122	120	143	159	167	206	Medford, OR (MSA)	189	242	300	322	301	314	255	211	165	120
Lafayette-West Lafayette, IN (MSA)	225	218	209	275	321	331	310	304	292	294	Memphis, TN-MS-AR (MSA)	138	136	144	139	108	85	64	50	56	46
Pensacola-Ferry Pass-Brent, FL (MSA)	226	261	225	277	252	272	240	233	196	229	Merced, CA (MSA)	247	279	266	315	294	348	318	305	286	247
Asheville, NC (MSA)	227	262	301	336	334	303	283	279	259	227	Miami-Fort Lauderdale-West Palm Beach, FL (MSA)	73	97	135	76	112	114	100	84	77	53
Waterloo-Cedar Falls, IA (MSA)	228	217	218	212	206	170	192	199	236	263	Michigan City-La Porte, IN (MSA)	350	341	355	350	363	357	347	351	343	335
Bloomington, IN (MSA)	229	269	312	299	268	270	291	302	311	345	Midland, MI (MSA)	323	350	284	327	319	320	na	na	na	na
Ames, IA (MSA)	230	212	219	198	177	151	135	149	125	143	Midland, TX (MSA)	155	140	108	66	98	125	177	167	182	184

383 Metropolitan Areas	2019	2018	2017	2016	2015	2014	2013	2012	2011	2010	383 Metropolitan Areas	2019	2018	2017	2016	2015	2014	2013	2012	2011	2010
South Bend-Mishawaka, IN-MI (MSA)	231	207	251	305	307	262	219	256	223	189	Milwaukee-Waukesha-West Allis, WI (MSA)	89	71	50	93	82	53	66	70	94	66
Kingston, NY (MSA)	232	258	254	293	266	252	280	275	277	246	Minneapolis-St. Paul-Bloomington, MN-WI (MSA)	35	28	46	37	60	71	57	64	38	31
Wichita, KS (MSA)	233	204	158	167	174	175	203	192	204	190	Missoula, MT (MSA)	75	144	188	226	199	166	172	119	91	74
Jackson, TN (MSA)	234	247	288	292	155	192	218	247	235	205	Mobile, AL (MSA)	306	349	307	255	269	261	221	193	205	233
Greenville, NC (MSA)	235	238	247	283	256	221	236	261	254	289	Modesto, CA (MSA)	110	96	148	183	221	242	229	226	193	148
Lansing-East Lansing, MI (MSA)	236	248	290	306	326	342	319	293	263	225	Monroe, LA (MSA)	331	295	262	173	184	215	211	222	208	223
Topeka, KS (MSA)	237	200	201	257	248	228	185	208	247	276	Monroe, MI (MSA)	270	260	294	250	290	311	329	323	298	275
Lima, OH (MSA)	238	265	289	324	313	326	308	313	322	313	Montgomery, AL (MSA)	210	251	205	164	125	105	98	72	84	65
Tuscaloosa, AL (MSA)	239	190	126	138	165	161	173	165	143	149	Morgantown, WV (MSA)	124	104	130	62	35	57	69	68	101	131
Longview, WA (MSA)	240	268	304	228	272	305	304	294	310	290	Morristown, TN (MSA)	316	305	315	364	360	351	340	338	353	338
Redding, CA (MSA)	241	215	281	312	300	275	231	201	146	127	Mount Vernon-Anacortes, WA (MSA)	96	149	214	213	240	195	131	90	37	47
Gettysburg, PA (MSA)	242	239	259	244	298	293	na	na	na	na	Muncie, IN (MSA)	369	369	374	371	370	365	361	362	360	365
Fayetteville, NC (MSA)	243	220	171	133	85	92	59	59	92	122	Muskegon, MI (MSA)	345	353	365	360	372	371	356	359	358	353
El Paso, TX (MSA)	244	219	174	132	110	101	93	120	158	186	Myrtle Beach-Conway-North Myrtle Beach, SC-NC (MSA)	198	254	253	297	309	310	324	316	283	241
Pittsfield, MA (MSA)	245	236	269	216	215	254	244	230	219	245	Napa, CA (MSA)	5	2	3	23	50	66	52	46	21	32
Tucson, AZ (MSA)	246	276	226	280	274	281	226	218	174	158	Naples-Immokalee-Marco Island, FL (MSA)	134	108	93	154	197	222	208	188	148	114
Merced, CA (MSA)	247	279	266	315	294	348	318	305	286	247	Nashville-Davidson-Murfreesboro-Franklin, TN (MSA)	1	4	10	10	7	5	3	4	8	13
Sebastian-Vero Beach, FL (MSA)	248	256	264	303	347	330	321	298	273	243	New Bern, NC (MSA)	334	310	291	289	249	220	na	na	na	na
Grants Pass, OR (MSA)	249	309	359	375	374	367	na	na	na	na	New Haven-Milford, CT (MSA)	98	94	51	85	70	75	72	57	65	55
Dubuque, IA (MSA)	250	235	235	190	158	144	158	196	227	238	New Orleans-Metairie, LA (MSA)	224	177	117	119	122	120	143	159	167	206
Houma-Thibodaux, LA (MSA)	251	187	95	52	96	127	165	187	248	260	New York-Newark-Jersey City, NY-NJ-PA (MSA)	70	39	77	27	42	27	32	43	64	62
Sioux City, IA-NE-SD (MSA)	252	216	168	204	214	184	220	231	258	280	Niles-Benton Harbor, MI (MSA)	338	351	346	351	359	364	348	350	349	347
Albany, OR (MSA)	253	284	330	363	371	372	na	na	na	na	North Port-Sarasota-Bradenton, FL (MSA)	173	210	236	234	260	304	285	266	220	204
Peoria, IL (MSA)	254	237	230	225	181	119	149	152	144	116	Norwich-New London, CT (MSA)	95	148	133	107	89	72	50	47	43	34
Harrisonburg, VA (MSA)	255	226	197	202	193	203	195	173	201	208	Ocala, FL (MSA)	343	344	360	357	361	354	322	285	274	236
Lafayette, LA (MSA)	256	198	98	46	76	59	77	98	107	126	Ocean City, NJ (MSA)	207	206	184	211	151	185	201	220	249	268
Springfield, IL (MSA)	257	173	189	215	202	181	155	194	232	266	Odessa, TX (MSA)	146	156	100	57	126	165	225	205	214	218

383 Metropolitan Areas	2019	2018	2017	2016	2015	2014	2013	2012	2011	2010	383 Metropolitan Areas	2019	2018	2017	2016	2015	2014	2013	2012	2011	2010
Port St. Lucie, FL (MSA)	258	267	308	319	331	322	290	262	224	214	Ogden-Clearfield, UT (MSA)	92	113	114	106	129	111	84	56	79	110
Evansville, IN-KY (MSA)	259	243	208	206	211	196	178	191	176	168	Oklahoma City, OK (MSA)	101	68	26	30	68	76	103	85	99	75
Wheeling, WV-OH (MSA)	260	297	239	168	192	250	309	310	341	339	Olympia-Tumwater, WA (MSA)	24	37	68	87	81	50	25	11	7	14
Victoria, TX (MSA)	261	199	137	98	140	176	163	186	186	179	Omaha-Council Bluffs, NE-IA (MSA)	81	47	58	12	5	8	13	17	13	23
Grand Island, NE (MSA)	262	228	276	237	225	235	na	na	na	na	Orlando-Kissimmee-Sanford, FL (MSA)	68	102	96	123	141	117	70	52	31	27
Dalton, GA (MSA)	263	277	341	316	345	345	332	306	315	286	Oshkosh-Neenah, WI (MSA)	83	76	128	105	102	104	110	135	161	132
Longview, TX (MSA)	264	201	173	121	159	174	148	118	124	139	Owensboro, KY (MSA)	337	331	277	256	264	295	293	319	331	329
Blacksburg-Christiansburg-Radford, VA (MSA)	265	249	240	239	208	257	286	278	301	333	Oxnard-Thousand Oaks-Ventura, CA (MSA)	42	41	64	94	57	74	76	60	33	30
Enid, OK (MSA)	266	184	166	na	na	na	na	na	na	na	Palm Bay-Melbourne-Titusville, FL (MSA)	199	252	297	313	286	294	246	224	188	169
Pueblo, CO (MSA)	267	306	350	330	297	248	247	267	279	293	Panama City, FL (MSA)	219	253	280	268	247	213	164	146	150	192
Lakeland-Winter Haven, FL (MSA)	268	272	270	286	296	306	284	268	233	267	Parkersburg-Vienna, WV (MSA)	378	377	349	356	327	332	326	326	308	330
Mankato-North Mankato, MN (MSA)	269	283	279	317	346	344	315	284	256	201	Pensacola-Ferry Pass-Brent, FL (MSA)	226	261	225	277	252	272	240	233	196	229
Monroe, MI (MSA)	270	260	294	250	290	311	329	323	298	275	Peoria, IL (MSA)	254	237	230	225	181	119	149	152	144	116
Jefferson City, MO (MSA)	271	229	204	205	182	182	142	172	210	181	Philadelphia-Camden-Wilmington, PA-NJ-DE-MD (MSA)	55	25	28	22	25	33	31	44	39	61
Atlantic City-Hammonton, NJ (MSA)	272	286	257	218	204	168	168	179	189	177	Phoenix-Mesa-Scottsdale, AZ (MSA)	64	78	85	80	77	77	62	36	20	16
East Stroudsburg, PA (MSA)	273	301	316	338	335	289	na	na	na	na	Pine Bluff, AR (MSA)	381	382	361	372	354	329	316	317	345	346
Tallahassee, FL (MSA)	274	263	229	271	270	237	181	140	112	136	Pittsburgh, PA (MSA)	82	62	34	36	24	46	51	58	82	73
Cape Girardeau, MO-IL (MSA)	275	240	248	240	210	218	214	219	221	188	Pittsfield, MA (MSA)	245	236	269	216	215	254	244	230	219	245
Roanoke, VA (MSA)	276	230	177	194	175	211	222	197	217	232	Pocatello, ID (MSA)	295	326	351	373	379	377	354	355	347	341
Dover, DE (MSA)	277	244	200	195	154	159	139	158	168	182	Port St. Lucie, FL (MSA)	258	267	308	319	331	322	290	262	224	214
Visalia-Porterville, CA (MSA)	278	335	342	294	329	337	306	303	265	224	Portland-South Portland, ME (MSA)	47	67	90	124	106	81	95	132	178	152
Carson City, NV (MSA)	279	298	273	260	233	273	230	195	170	121	Portland-Vancouver-Hillsboro, OR-WA (MSA)	11	53	66	38	41	36	45	51	25	24
Winston-Salem, NC (MSA)	280	292	314	308	280	232	180	181	179	176	Prescott, AZ (MSA)	220	288	302	359	369	368	345	333	305	248
Greensboro-High Point, NC (MSA)	281	255	274	259	243	226	215	190	159	134	Providence-Warwick, RI-MA (MSA)	145	109	55	86	52	84	88	104	109	98
Hanford-Corcoran, CA (MSA)	282	318	313	320	304	315	271	244	226	191	Provo-Orem, UT (MSA)	41	48	113	101	152	180	186	156	134	129

<b>383 Metropolitan Areas</b>	<b>2019</b>	<b>2018</b>	<b>2017</b>	<b>2016</b>	<b>2015</b>	<b>2014</b>	<b>2013</b>	<b>2012</b>	<b>2011</b>	<b>2010</b>	<b>383 Metropolitan Areas</b>	<b>2019</b>	<b>2018</b>	<b>2017</b>	<b>2016</b>	<b>2015</b>	<b>2014</b>	<b>2013</b>	<b>2012</b>	<b>2011</b>	<b>2010</b>
Jonesboro, AR (MSA)	283	246	283	252	292	282	298	315	340	342	Pueblo, CO (MSA)	267	306	350	330	297	248	247	267	279	293
Deltona-Daytona Beach-Ormond Beach, FL (MSA)	284	296	347	337	355	353	344	311	280	258	Punta Gorda, FL (MSA)	301	287	333	340	362	373	355	331	326	310
Yuma, AZ (MSA)	285	319	348	342	341	312	254	260	294	271	Racine, WI (MSA)	294	270	267	323	315	288	268	287	257	211
Rome, GA (MSA)	286	271	324	368	373	380	363	361	355	360	Raleigh, NC (MSA)	9	9	42	21	14	37	30	18	22	15
Decatur, IL (MSA)	287	293	250	279	288	240	262	263	237	234	Rapid City, SD (MSA)	132	118	131	152	137	100	122	136	137	167
Albuquerque, NM (MSA)	288	316	249	200	144	130	99	87	95	111	Reading, PA (MSA)	158	155	140	158	139	149	123	127	132	140
Santa Fe, NM (MSA)	289	315	263	282	284	231	167	124	88	57	Redding, CA (MSA)	241	215	281	312	300	275	231	201	146	127
Las Cruces, NM (MSA)	290	325	311	272	228	236	199	207	239	274	Reno, NV (MSA)	139	197	242	245	223	201	170	138	90	41
Elizabethtown-Fort Knox, KY (MSA)	291	332	343	304	242	260	207	253	266	287	Richmond, VA (MSA)	44	30	22	56	47	62	44	35	36	63
Battle Creek, MI (MSA)	292	317	344	311	303	309	266	249	253	291	Riverside-San Bernardino-Ontario, CA (MSA)	69	153	169	148	176	145	116	82	40	28
Johnson City, TN (MSA)	293	307	338	307	267	251	256	289	319	304	Roanoke, VA (MSA)	276	230	177	194	175	211	222	197	217	232
Racine, WI (MSA)	294	270	267	323	315	288	268	287	257	211	Rochester, MN (MSA)	149	119	143	184	212	187	145	101	114	128
Pocatello, ID (MSA)	295	326	351	373	379	377	354	355	347	341	Rochester, NY (MSA)	195	150	119	60	69	60	81	103	121	135
Valdosta, GA (MSA)	296	324	339	287	333	291	260	238	230	262	Rockford, IL (MSA)	319	330	322	270	287	284	292	301	290	261
Bangor, ME (MSA)	297	291	298	262	245	208	243	229	245	244	Rocky Mount, NC (MSA)	382	381	381	381	378	369	349	342	339	350
Binghamton, NY (MSA)	298	289	252	231	224	223	259	273	296	327	Rome, GA (MSA)	286	271	324	368	373	380	363	361	355	360
Charleston, WV (MSA)	299	294	221	196	162	132	101	99	80	113	Sacramento-Roseville-Arden-Arcade, CA (MSA)	15	45	72	67	64	61	55	45	19	5
Joplin, MO (MSA)	300	281	220	258	244	210	249	246	275	250	Saginaw, MI (MSA)	351	359	335	353	353	352	343	345	344	325
Punta Gorda, FL (MSA)	301	287	333	340	362	373	355	331	326	310	Salem, OR (MSA)	154	208	268	220	250	249	281	235	197	212
Lynchburg, VA (MSA)	302	323	310	276	251	299	307	312	285	252	Salinas, CA (MSA)	72	98	142	162	185	199	176	147	119	107
Macon-Bibb County, GA (MSA)	303	274	265	300	325	316	294	286	291	323	Salisbury, MD-DE (MSA)	175	133	141	176	186	229	241	257	229	196
Brownsville-Harlingen, TX (MSA)	304	266	244	265	241	246	204	221	240	253	Salt Lake City, UT (MSA)	6	8	29	3	9	17	12	6	2	6
Utica-Rome, NY (MSA)	305	313	296	208	169	172	210	252	287	308	San Angelo, TX (MSA)	330	273	203	238	295	321	299	324	323	337
Mobile, AL (MSA)	306	349	307	255	269	261	221	193	205	233	San Antonio-New Braunfels, TX (MSA)	33	12	17	8	6	6	7	10	15	29
Lawton, OK (MSA)	307	299	275	224	219	200	159	180	228	288	San Diego-Carlsbad, CA (MSA)	7	14	5	13	27	31	20	20	14	8
Abilene, TX (MSA)	308	257	199	242	271	313	305	332	317	332	San Francisco-Oakland-Hayward, CA (MSA)	19	19	2	28	36	55	73	69	67	51
Carbondale-Marion, IL (MSA)	309	282	303	223	200	209	na	na	na	na	San Jose-Sunnyvale-Santa Clara, CA (MSA)	4	5	7	25	58	133	132	97	86	71
Grand Junction, CO (MSA)	310	285	325	295	318	263	189	148	103	84	San Luis Obispo-Paso Robles-Arroyo Grande, CA (MSA)	14	17	19	47	63	98	85	75	41	49
El Centro, CA (MSA)	311	338	328	329	336	336	287	288	270	300	Santa Cruz-Watsonville, CA (MSA)	66	57	109	114	147	206	183	151	141	133
Staunton-Waynesboro, VA (MSA)	312	302	287	318	328	327	na	na	na	na	Santa Fe, NM (MSA)	289	315	263	282	284	231	167	124	88	57



383 Metropolitan Areas	2019	2018	2017	2016	2015	2014	2013	2012	2011	2010	383 Metropolitan Areas	2019	2018	2017	2016	2015	2014	2013	2012	2011	2010
Beaumont-Port Arthur, TX (MSA)	313	275	213	180	190	153	182	175	212	264	Santa Maria-Santa Barbara, CA (MSA)	40	61	53	97	87	83	92	114	83	69
Cleveland, TN (MSA)	314	264	196	165	203	205	250	292	314	309	Santa Rosa, CA (MSA)	26	18	49	89	130	150	126	86	47	39
Canton-Massillon, OH (MSA)	315	314	299	301	322	343	336	346	330	297	Savannah, GA (MSA)	80	103	102	122	123	135	108	91	72	94
Morristown, TN (MSA)	316	305	315	364	360	351	340	338	353	338	Scranton-Wilkes-Barre-Hazleton, PA (MSA)	216	195	127	144	134	134	161	184	152	198
Hot Springs, AR (MSA)	317	322	292	325	276	247	279	280	300	324	Seattle-Tacoma-Bellevue, WA (MSA)	2	3	13	1	2	4	5	3	3	1
Janesville-Beloit, WI (MSA)	318	321	353	333	305	341	339	344	333	311	Sebastian-Vero Beach, FL (MSA)	248	256	264	303	347	330	321	298	273	243
Rockford, IL (MSA)	319	330	322	270	287	284	292	301	290	261	Sebring, FL (MSA)	373	378	375	379	380	378	na	na	na	na
Lake Havasu City-Kingman, AZ (MSA)	320	346	345	367	368	370	351	330	281	217	Sheboygan, WI (MSA)	106	134	192	191	191	164	190	174	154	123
Huntington-Ashland, WV-KY-OH (MSA)	321	300	228	232	201	227	265	255	269	277	Sherman-Denison, TX (MSA)	322	311	243	219	222	256	248	281	299	328
Sherman-Denison, TX (MSA)	322	311	243	219	222	256	248	281	299	328	Shreveport-Bossier City, LA (MSA)	324	280	210	160	163	129	136	163	142	164
Midland, MI (MSA)	323	350	284	327	319	320	na	na	na	na	Sierra Vista-Douglas, AZ (MSA)	340	357	327	344	312	300	na	na	na	na
Shreveport-Bossier City, LA (MSA)	324	280	210	160	163	129	136	163	142	164	Sioux City, IA-NE-SD (MSA)	252	216	168	204	214	184	220	231	258	280
Walla Walla, WA (MSA)	325	290	261	281	323	328	na	na	na	na	Sioux Falls, SD (MSA)	17	26	32	24	8	15	9	9	10	21
Lewiston-Auburn, ME (MSA)	326	304	293	321	282	296	258	277	325	296	South Bend-Mishawaka, IN-MI (MSA)	231	207	251	305	307	262	219	256	223	189
Jackson, MI (MSA)	327	329	321	358	324	363	342	349	346	336	Spartanburg, SC (MSA)	192	196	255	221	253	265	282	276	251	251
Columbus, GA-AL (MSA)	328	303	227	189	150	157	175	166	180	216	Spokane-Spokane Valley, WA (MSA)	126	161	182	170	187	156	133	109	115	109
Florence-Muscle Shoals, AL (MSA)	329	339	318	273	259	276	302	297	306	312	Springfield, IL (MSA)	257	173	189	215	202	181	155	194	232	266
San Angelo, TX (MSA)	330	273	203	238	295	321	299	324	323	337	Springfield, MA (MSA)	141	139	116	117	113	140	156	161	145	183
Monroe, LA (MSA)	331	295	262	173	184	215	211	222	208	223	Springfield, MO (MSA)	205	192	241	209	220	189	212	206	199	162
St. Joseph, MO-KS (MSA)	332	334	319	233	189	173	166	177	222	230	Springfield, OH (MSA)	363	371	366	369	357	362	359	356	362	362
Duluth, MN-WI (MSA)	333	320	272	246	285	297	288	308	284	259	St. Cloud, MN (MSA)	222	250	232	201	257	285	275	269	282	242
New Bern, NC (MSA)	334	310	291	289	249	220	na	na	na	na	St. George, UT (MSA)	186	232	231	253	308	318	278	242	216	180
Farmington, NM (MSA)	335	358	336	328	320	274	245	212	184	220	St. Joseph, MO-KS (MSA)	332	334	319	233	189	173	166	177	222	230
Florence, SC (MSA)	336	327	332	314	302	323	312	307	297	298	St. Louis, MO-IL (MSA)	113	101	45	104	73	94	87	93	127	101
Owensboro, KY (MSA)	337	331	277	256	264	295	293	319	331	329	State College, PA (MSA)	128	111	92	53	29	73	89	107	133	172
Niles-Benton Harbor, MI (MSA)	338	351	346	351	359	364	348	350	349	347	Staunton-Waynesboro, VA (MSA)	312	302	287	318	328	327	na	na	na	na
Brunswick, GA (MSA)	339	363	368	361	349	335	313	296	268	272	Stockton-Lodi, CA (MSA)	74	106	154	186	216	238	198	170	123	93
Sierra Vista-Douglas, AZ (MSA)	340	357	327	344	312	300	na	na	na	na	Sumter, SC (MSA)	353	328	295	309	277	308	325	343	332	348
Elmira, NY (MSA)	341	312	306	248	281	287	303	314	338	322	Syracuse, NY (MSA)	152	145	185	102	78	78	107	129	162	195

383 Metropolitan Areas	2019	2018	2017	2016	2015	2014	2013	2012	2011	2010	383 Metropolitan Areas	2019	2018	2017	2016	2015	2014	2013	2012	2011	2010
Dothan, AL (MSA)	342	340	317	285	255	279	289	291	318	285	Tallahassee, FL (MSA)	274	263	229	271	270	237	181	140	112	136
Ocala, FL (MSA)	343	344	360	357	361	354	322	285	274	236	Tampa-St. Petersburg-Clearwater, FL (MSA)	90	93	112	115	132	116	127	95	57	85
Kingsport-Bristol-Bristol, TN-VA (MSA)	344	337	331	335	337	325	311	295	321	299	Terre Haute, IN (MSA)	364	368	356	347	344	339	317	318	327	340
Muskegon, MI (MSA)	345	353	365	360	372	371	356	359	358	353	Texarkana, TX-AR (MSA)	357	342	326	291	232	183	152	178	209	207
Hinesville, GA (MSA)	346	343	357	332	310	268	205	216	234	257	The Villages, FL (MSA)	182	223	216	166	198	233	na	na	na	na
Homosassa Springs, FL (MSA)	347	347	367	352	352	356	na	na	na	na	Toledo, OH (MSA)	151	121	193	151	168	178	209	243	276	249
Hammond, LA (MSA)	348	365	305	241	273	269	na	na	na	na	Topeka, KS (MSA)	237	200	201	257	248	228	185	208	247	276
Gulfport-Biloxi-Pascagoula, MS (MSA)	349	360	352	288	239	264	235	232	267	302	Trenton, NJ (MSA)	103	70	87	77	55	56	39	34	34	19
Michigan City-La Porte, IN (MSA)	350	341	355	350	363	357	347	351	343	335	Tucson, AZ (MSA)	246	276	226	280	274	281	226	218	174	158
Saginaw, MI (MSA)	351	359	335	353	353	352	343	345	344	325	Tulsa, OK (MSA)	165	117	111	79	103	124	137	141	155	142
Williamsport, PA (MSA)	352	308	246	267	258	271	296	325	334	356	Tuscaloosa, AL (MSA)	239	190	126	138	165	161	173	165	143	149
Sumter, SC (MSA)	353	328	295	309	277	308	325	343	332	348	Twin Falls, ID (MSA)	212	231	na	na	na	na	na	na	na	na
Kokomo, IN (MSA)	354	333	340	355	367	376	352	354	354	343	Tyler, TX (MSA)	129	83	70	131	167	202	194	198	169	137
Erie, PA (MSA)	355	345	323	334	339	338	300	321	309	317	Utica-Rome, NY (MSA)	305	313	296	208	169	172	210	252	287	308
Flint, MI (MSA)	356	361	369	377	376	379	364	363	357	358	Valdosta, GA (MSA)	296	324	339	287	333	291	260	238	230	262
Texarkana, TX-AR (MSA)	357	342	326	291	232	183	152	178	209	207	Vallejo-Fairfield, CA (MSA)	21	27	39	73	97	106	102	106	62	35
Burlington, NC (MSA)	358	354	364	376	375	374	350	352	350	349	Victoria, TX (MSA)	261	199	137	98	140	176	163	186	186	179
Wichita Falls, TX (MSA)	359	336	329	331	340	361	338	348	342	320	Vineland-Bridgeton, NJ (MSA)	190	172	215	203	164	123	147	168	195	193
Youngstown-Warren-Boardman, OH-PA (MSA)	360	362	358	339	342	360	341	347	351	344	Virginia Beach-Norfolk-Newport News, VA-NC (MSA)	160	124	104	83	39	40	28	25	42	90
Kankakee, IL (MSA)	361	352	320	354	348	340	331	337	335	319	Visalia-Porterville, CA (MSA)	278	335	342	294	329	337	306	303	265	224
Cumberland, MD-WV (MSA)	362	356	337	290	237	244	269	290	303	326	Waco, TX (MSA)	131	110	122	179	153	154	140	171	202	239
Springfield, OH (MSA)	363	371	366	369	357	362	359	356	362	362	Walla Walla, WA (MSA)	325	290	261	281	323	328	na	na	na	na
Terre Haute, IN (MSA)	364	368	356	347	344	339	317	318	327	340	Warner Robins, GA (MSA)	167	170	186	143	118	95	60	78	113	153
Gadsden, AL (MSA)	365	367	371	362	343	324	333	339	352	352	Washington-Arlington-Alexandria, DC-VA-MD-WV (MSA)	16	20	18	9	1	3	1	1	1	2
Hickory-Lenoir-Morganton, NC (MSA)	366	364	373	380	377	375	353	353	356	354	Waterloo-Cedar Falls, IA (MSA)	228	217	218	212	206	170	192	199	236	263
Fort Smith, AR-OK (MSA)	367	372	372	346	358	347	337	334	316	284	Watertown-Fort Drum, NY (MSA)	214	189	164	103	65	43	na	na	na	na
Laredo, TX (MSA)	368	348	334	296	332	319	276	237	203	166	Wausau, WI (MSA)	159	162	124	142	145	188	160	150	140	104
Muncie, IN (MSA)	369	369	374	371	370	365	361	362	360	365	Weirton-Steubenville, WV-OH (MSA)	380	380	380	370	356	366	360	357	361	357



<b>383 Metropolitan Areas</b>	<b>2019</b>	<b>2018</b>	<b>2017</b>	<b>2016</b>	<b>2015</b>	<b>2014</b>	<b>2013</b>	<b>2012</b>	<b>2011</b>	<b>2010</b>	<b>383 Metropolitan Areas</b>	<b>2019</b>	<b>2018</b>	<b>2017</b>	<b>2016</b>	<b>2015</b>	<b>2014</b>	<b>2013</b>	<b>2012</b>	<b>2011</b>	<b>2010</b>
Albany, GA (MSA)	370	370	377	348	350	334	320	309	288	307	Wenatchee, WA (MSA)	163	191	202	264	314	333	274	259	261	269
Decatur, AL (MSA)	371	366	362	341	351	350	346	340	312	295	Wheeling, WV-OH (MSA)	260	297	239	168	192	250	309	310	341	339
Anniston-Oxford-Jacksonville, AL (MSA)	372	379	379	374	364	355	334	335	348	331	Wichita Falls, TX (MSA)	359	336	329	331	340	361	338	348	342	320
Sebring, FL (MSA)	373	378	375	379	380	378	na	na	na	na	Wichita, KS (MSA)	233	204	158	167	174	175	203	192	204	190
Bay City, MI (MSA)	374	375	376	366	365	359	357	360	359	361	Williamsport, PA (MSA)	352	308	246	267	258	271	296	325	334	356
Johnstown, PA (MSA)	375	373	354	343	338	317	301	322	329	355	Wilmington, NC (MSA)	156	168	190	136	101	89	97	100	106	112
Mansfield, OH (MSA)	376	374	370	365	366	358	362	358	363	359	Winchester, VA-WV (MSA)	97	107	101	109	99	155	121	121	138	147
Danville, IL (MSA)	377	376	378	378	381	381	366	366	366	366	Winston-Salem, NC (MSA)	280	292	314	308	280	232	180	181	179	176
Parkersburg-Vienna, WV (MSA)	378	377	349	356	327	332	326	326	308	330	Worcester, MA-CT (MSA)	114	123	106	129	90	152	117	125	151	160
Goldsboro, NC (MSA)	379	355	363	349	330	301	277	320	337	321	Yakima, WA (MSA)	187	233	286	261	254	266	217	227	243	278
Weirton-Steubenville, WV-OH (MSA)	380	380	380	370	356	366	360	357	361	357	York-Hanover, PA (MSA)	221	259	256	217	209	186	191	202	207	215
Pine Bluff, AR (MSA)	381	382	361	372	354	329	316	317	345	346	Youngstown-Warren-Boardman, OH-PA (MSA)	360	362	358	339	342	360	341	347	351	344
Rocky Mount, NC (MSA)	382	381	381	381	378	369	349	342	339	350	Yuba City, CA (MSA)	121	181	237	274	246	253	227	200	206	173
Beckley, WV (MSA)	383	383	382	345	291	283	na	na	na	na	Yuma, AZ (MSA)	285	319	348	342	341	312	254	260	294	271

551 Micropolitan Areas	2019	2018	2017	2016	2015	2014	2013	2012	2011	2010	551 Micropolitan Areas	2019	2018	2017	2016	2015	2014	2013	2012	2011	2010
Bozeman, MT (McrSA)	1	1	7	15	20	10	19	9	7	7	Aberdeen, SD (McrSA)	75	36	18	48	39	30	66	48	30	34
Summit Park, UT (McrSA)	2	42	9	5	16	20	na	na	na	na	Aberdeen, WA (McrSA)	218	337	369	409	426	407	363	318	237	190
Lewisburg, PA (McrSA)	3	2	10	40	21	27	26	39	78	150	Ada, OK (McrSA)	145	211	183	199	275	237	309	361	341	362
Hood River, OR (McrSA)	4	39	133	214	260	209	274	239	199	226	Adrian, MI (McrSA)	453	460	480	469	455	470	495	517	468	403
Wooster, OH (McrSA)	5	5	34	84	110	112	167	200	163	135	Alamogordo, NM (McrSA)	329	325	313	263	188	167	146	228	342	383
Breckenridge, CO (McrSA)	6	72	179	265	338	325	na	na	na	na	Albemarle, NC (McrSA)	275	334	433	454	441	426	443	421	390	343
Edwards, CO (McrSA)	7	8	28	69	108	128	90	50	9	1	Albert Lea, MN (McrSA)	282	319	256	258	323	281	341	385	343	263
Eureka-Arcata-Fortuna, CA (McrSA)	8	83	144	159	162	135	147	137	79	49	Albertville, AL (McrSA)	403	438	481	394	377	396	457	438	380	325
Oxford, MS (McrSA)	9	49	36	17	17	14	11	33	26	42	Alexander City, AL (McrSA)	392	453	499	na	na	na	na	na	na	na
Ellensburg, WA (McrSA)	10	34	88	49	41	35	36	37	32	26	Alexandria, MN (McrSA)	115	114	203	240	309	264	298	328	238	186
Truckee-Grass Valley, CA (McrSA)	11	3	48	133	131	90	78	86	22	17	Alice, TX (McrSA)	449	315	192	140	215	252	325	293	218	163
Jackson, WY-ID (McrSA)	12	63	71	20	38	61	59	36	20	10	Alma, MI (McrSA)	438	467	495	428	419	439	492	543	548	556
Laconia, NH (McrSA)	13	13	6	45	43	48	43	35	63	75	Alpena, MI (McrSA)	366	432	474	413	417	375	365	381	314	320
Kalispell, MT (McrSA)	14	69	102	100	151	149	142	87	45	35	Altus, OK (McrSA)	301	320	299	225	294	279	266	252	292	361
Oak Harbor, WA (McrSA)	15	90	172	268	283	220	157	125	142	78	Americus, GA (McrSA)	512	528	518	496	501	493	556	532	500	505
Brookings, SD (McrSA)	16	18	15	77	70	94	79	105	120	103	Amsterdam, NY (McrSA)	123	144	195	176	147	173	237	247	270	244
Barre, VT (McrSA)	17	14	8	13	35	7	9	15	28	29	Andrews, TX (McrSA)	46	6	12	14	22	86	150	233	209	162
Sidney, OH (McrSA)	18	12	27	67	95	109	117	81	139	83	Angola, IN (McrSA)	397	312	388	429	440	466	486	526	512	453
Claremont-Lebanon, NH-VT (McrSA)	19	11	3	10	28	6	37	45	60	71	Arcadia, FL (McrSA)	467	502	504	518	532	525	547	536	479	516
New Philadelphia-Dover, OH (McrSA)	20	22	49	132	204	283	336	355	366	289	Ardmore, OK (McrSA)	181	134	66	38	100	127	194	165	172	192
The Dalles, OR (McrSA)	21	46	63	92	99	69	99	93	95	151	Arkadelphia, AR (McrSA)	442	430	468	470	435	406	380	316	321	404
Pullman, WA (McrSA)	22	106	92	124	102	156	197	266	356	341	Arkansas City-Winfield, KS (McrSA)	437	402	303	246	305	397	465	489	445	463
Findlay, OH (McrSA)	23	28	24	29	15	50	35	44	80	118	Ashland, OH (McrSA)	164	176	249	312	331	347	355	350	363	318
Stevens Point, WI (McrSA)	24	38	44	111	76	75	106	94	133	112	Ashtabula, OH (McrSA)	365	400	408	456	442	399	434	464	497	474
Kapaa, HI (McrSA)	25	9	52	131	169	170	178	98	135	148	Astoria, OR (McrSA)	38	94	155	181	171	133	134	90	52	33
Vineyard Haven, MA (McrSA)	26	29	14	23	18	17	na	na	na	na	Atchison, KS (McrSA)	493	524	529	521	531	523	538	527	541	461
Augusta-Waterville, ME (McrSA)	27	48	41	56	54	25	31	23	41	32	Athens, OH (McrSA)	149	127	156	206	114	159	221	193	246	310
Traverse City, MI (McrSA)	28	4	17	42	103	121	104	129	75	45	Athens, TN (McrSA)	186	244	320	315	327	275	351	335	331	329
Celina, OH (McrSA)	29	52	35	53	107	96	100	141	212	185	Athens, TX (McrSA)	345	239	233	234	320	354	338	384	449	441
Dickinson, ND (McrSA)	30	10	1	1	1	5	8	16	108	177	Atmore, AL (McrSA)	342	356	400	na	na	na	na	na	na	na
Whitewater-Elkhorn, WI (McrSA)	31	30	54	98	141	118	121	152	89	37	Auburn, IN (McrSA)	152	99	196	288	367	388	360	386	318	277
Salina, KS (McrSA)	32	91	118	126	67	104	109	109	99	84	Auburn, NY (McrSA)	197	148	104	80	87	138	207	246	245	208
Baraboo, WI (McrSA)	33	15	13	62	56	49	72	82	47	21	Augusta-Waterville, ME (McrSA)	27	48	41	56	54	25	31	23	41	32
Heber, UT (McrSA)	34	65	157	239	313	328	280	230	233	180	Austin, MN (McrSA)	263	178	213	190	247	186	203	196	250	221
Sevierville, TN (McrSA)	35	68	176	261	165	227	210	159	84	65	Bainbridge, GA (McrSA)	537	533	547	494	464	477	541	548	539	542
Red Bluff, CA (McrSA)	36	59	127	148	187	240	195	209	114	90	Baraboo, WI (McrSA)	33	15	13	62	56	49	72	82	47	21
Ketchikan, AK (McrSA)	37	16	22	43	46	53	64	75	138	101	Bardstown, KY (McrSA)	150	193	194	155	130	76	na	na	na	na

551 Micropolitan Areas	2019	2018	2017	2016	2015	2014	2013	2012	2011	2010	551 Micropolitan Areas	2019	2018	2017	2016	2015	2014	2013	2012	2011	2010
Astoria, OR (McrSA)	38	94	155	181	171	133	134	90	52	33	Barre, VT (McrSA)	17	14	8	13	35	7	9	15	28	29
Cookeville, TN (McrSA)	39	31	83	102	122	79	149	116	145	175	Bartlesville, OK (McrSA)	183	153	64	18	60	93	153	167	197	242
Plattsburgh, NY (McrSA)	40	37	25	55	36	23	44	21	29	47	Bastrop, LA (McrSA)	542	543	537	520	533	517	570	568	566	566
Paducah, KY-IL (McrSA)	41	79	32	32	19	31	10	31	33	44	Batavia, NY (McrSA)	64	60	53	46	44	43	81	118	130	164
Washington, IN (McrSA)	42	86	121	193	196	287	343	372	408	335	Batesville, AR (McrSA)	239	271	348	329	274	247	307	290	373	344
Shelbyville, TN (McrSA)	43	33	67	82	93	155	232	248	274	261	Bay City, TX (McrSA)	227	194	242	306	352	409	476	439	485	504
Pinehurst-Southern Pines, NC (McrSA)	44	27	103	149	121	72	52	83	34	24	Beatrice, NE (McrSA)	463	468	438	387	350	367	404	425	519	532
Easton, MD (McrSA)	45	24	46	58	50	22	74	84	42	25	Beaver Dam, WI (McrSA)	90	76	19	37	32	45	84	113	107	64
Andrews, TX (McrSA)	46	6	12	14	22	86	150	233	209	162	Bedford, IN (McrSA)	439	474	475	502	512	509	540	550	531	521
Durango, CO (McrSA)	47	7	16	7	42	18	13	6	1	3	Beeville, TX (McrSA)	502	417	302	219	288	431	497	541	501	498
Juneau, AK (McrSA)	48	45	42	22	7	34	16	64	127	72	Bellefontaine, OH (McrSA)	171	98	111	115	208	193	282	245	242	229
Helena, MT (McrSA)	49	54	38	8	14	3	2	2	2	6	Bemidji, MN (McrSA)	131	185	283	336	328	282	308	271	240	316
Keene, NH (McrSA)	50	32	29	28	59	24	42	51	72	50	Bennettsville, SC (McrSA)	455	498	503	484	418	490	551	562	535	522
Tullahoma-Manchester, TN (McrSA)	51	64	86	66	86	66	115	134	148	94	Bennington, VT (McrSA)	113	143	175	218	209	176	198	131	144	95
Carlsbad-Artesia, NM (McrSA)	52	23	4	16	40	54	58	18	14	19	Berlin, NH-VT (McrSA)	350	399	383	385	292	280	225	274	365	363
Glenwood Springs, CO (McrSA)	53	80	106	81	84	82	na	na	na	na	Big Rapids, MI (McrSA)	261	311	409	377	412	417	416	406	482	524
Paris, TN (McrSA)	54	149	252	316	249	302	358	395	371	425	Big Spring, TX (McrSA)	162	159	122	117	226	310	403	403	346	399
Quincy, IL-MO (McrSA)	55	62	107	189	126	141	206	225	271	275	Big Stone Gap, VA (McrSA)	498	511	395	304	189	80	na	na	na	na
Key West, FL (McrSA)	56	17	43	103	155	123	93	99	61	40	Blackfoot, ID (McrSA)	359	442	454	388	357	443	509	516	474	429
Fredericksburg, TX (McrSA)	57	19	50	86	104	78	94	104	106	106	Bluefield, WV-VA (McrSA)	452	377	301	208	144	81	126	122	123	178
Hermiston-Pendleton, OR (McrSA)	58	35	47	68	62	92	69	88	77	129	Blytheville, AR (McrSA)	533	483	484	407	456	479	485	506	516	483
Rock Springs, WY (McrSA)	59	67	20	31	24	19	29	29	12	5	Bogalusa, LA (McrSA)	491	463	422	414	467	444	475	510	487	477
Mount Vernon, OH (McrSA)	60	51	57	61	80	126	145	170	211	196	Bonham, TX (McrSA)	280	297	324	na	na	na	na	na	na	na
Sheridan, WY (McrSA)	61	26	23	24	49	16	15	5	11	12	Boone, IA (McrSA)	180	138	198	267	308	307	359	409	367	381
Mitchell, SD (McrSA)	62	55	33	73	13	60	125	103	188	231	Boone, NC (McrSA)	147	223	305	285	194	122	139	157	105	116
Concord, NH (McrSA)	63	61	55	4	25	1	1	1	4	8	Borger, TX (McrSA)	138	196	193	147	193	321	419	371	362	371
Batavia, NY (McrSA)	64	60	53	46	44	43	81	118	130	164	Bozeman, MT (McrSA)	1	1	7	15	20	10	19	9	7	7
Greenfield Town, MA (McrSA)	65	66	89	139	83	74	na	na	na	na	Bradford, PA (McrSA)	332	351	330	323	303	234	258	317	288	314
Willmar, MN (McrSA)	66	84	80	114	135	114	177	160	70	48	Brainerd, MN (McrSA)	127	97	185	262	334	370	345	369	337	273
Jasper, IN (McrSA)	67	20	21	27	69	120	108	145	96	91	Branson, MO (McrSA)	250	308	345	361	403	350	286	281	219	155
Holland, MI (McrSA)	68	126	126	194	261	336	na	na	na	na	Breckenridge, CO (McrSA)	6	72	179	265	338	325	na	na	na	na
Williston, ND (McrSA)	69	41	2	2	2	2	4	22	110	195	Brenham, TX (McrSA)	228	152	65	57	48	65	118	97	38	58
Yankton, SD (McrSA)	70	146	250	348	278	233	245	255	248	328	Brevard, NC (McrSA)	474	490	509	506	525	522	544	509	470	435
Paris, TX (McrSA)	71	104	101	47	68	95	101	127	192	232	Brookhaven, MS (McrSA)	340	324	259	186	217	152	224	180	210	216
Elko, NV (McrSA)	72	43	51	26	11	42	38	13	35	59	Brookings, OR (McrSA)	382	403	430	485	472	475	539	533	461	415
Seymour, IN (McrSA)	73	21	79	93	175	183	158	212	179	172	Brookings, SD (McrSA)	16	18	15	77	70	94	79	105	120	103
Oneonta, NY (McrSA)	74	111	141	141	89	147	238	236	213	246	Brownsville, TN (McrSA)	503	525	526	na	na	na	na	na	na	na
Aberdeen, SD (McrSA)	75	36	18	48	39	30	66	48	30	34	Brownwood, TX (McrSA)	265	237	238	299	259	242	233	222	285	346

551 Micropolitan Areas	2019	2018	2017	2016	2015	2014	2013	2012	2011	2010	551 Micropolitan Areas	2019	2018	2017	2016	2015	2014	2013	2012	2011	2010
Lewistown, PA (McrSA)	76	120	110	76	97	101	131	158	216	243	Bucyrus, OH (McrSA)	487	471	494	483	496	478	518	542	552	538
Minot, ND (McrSA)	77	25	5	3	6	4	7	12	21	53	Burley, ID (McrSA)	102	119	161	256	346	446	487	503	444	416
Coos Bay, OR (McrSA)	78	191	267	326	362	315	375	320	258	299	Burlington, IA-IL (McrSA)	213	175	191	270	207	262	213	150	228	193
Columbus, NE (McrSA)	79	125	81	97	65	106	46	59	83	152	Butte-Silver Bow, MT (McrSA)	104	129	100	44	8	15	17	25	17	27
Wapakoneta, OH (McrSA)	80	101	150	215	293	311	342	354	336	311	Cadillac, MI (McrSA)	408	485	508	497	517	518	542	552	521	486
Oxford, NC (McrSA)	81	40	123	150	112	77	na	na	na	na	Calhoun, GA (McrSA)	216	281	271	334	383	361	391	363	352	307
Cullman, AL (McrSA)	82	116	229	224	291	359	415	407	423	374	Cambridge, MD (McrSA)	229	265	295	354	272	304	370	427	433	421
Spearfish, SD (McrSA)	83	140	230	296	239	172	138	74	117	108	Cambridge, OH (McrSA)	103	77	39	120	183	267	323	357	438	493
Laramie, WY (McrSA)	84	44	60	129	74	108	75	96	81	138	Camden, AR (McrSA)	461	480	460	381	355	342	315	319	407	462
Hailey, ID (McrSA)	85	117	139	222	170	221	na	na	na	na	Campbellsville, KY (McrSA)	401	472	489	478	487	453	421	482	543	554
Clarksburg, WV (McrSA)	86	82	31	19	9	52	85	43	94	132	Canon City, CO (McrSA)	206	203	274	360	325	284	241	227	175	121
Jefferson, GA (McrSA)	87	181	221	151	231	185	na	na	na	na	Canton, IL (McrSA)	518	520	506	514	494	484	496	546	545	540
Torrington, CT (McrSA)	88	47	11	33	47	12	22	20	19	18	Carlsbad-Artesia, NM (McrSA)	52	23	4	16	40	54	58	18	14	19
Sterling, CO (McrSA)	89	75	45	70	146	174	230	250	203	257	Carroll, IA (McrSA)	198	216	247	na	na	na	na	na	na	na
Beaver Dam, WI (McrSA)	90	76	19	37	32	45	84	113	107	64	Cedar City, UT (McrSA)	311	410	416	362	439	450	490	428	360	337
Red Wing, MN (McrSA)	91	70	58	138	129	129	192	187	222	153	Cedartown, GA (McrSA)	423	409	386	457	471	452	479	453	410	390
Moses Lake, WA (McrSA)	92	96	120	130	161	134	91	100	101	122	Celina, OH (McrSA)	29	52	35	53	107	96	100	141	212	185
Durant, OK (McrSA)	93	124	212	170	197	270	312	237	249	367	Central City, KY (McrSA)	409	482	424	na	na	na	na	na	na	na
Ukiah, CA (McrSA)	94	88	153	241	244	219	223	195	124	79	Centralia, IL (McrSA)	484	492	453	431	386	378	454	451	435	485
Jamestown, ND (McrSA)	95	50	108	108	109	103	160	144	187	282	Centralia, WA (McrSA)	222	280	276	277	332	320	337	294	260	295
LaGrange, GA (McrSA)	96	107	90	63	51	33	40	79	55	73	Charleston-Mattoon, IL (McrSA)	339	405	394	465	448	432	456	474	486	470
Selinsgrove, PA (McrSA)	97	190	281	335	356	318	374	379	313	268	Chillicothe, OH (McrSA)	224	161	243	322	321	259	214	198	257	308
Pierre, SD (McrSA)	98	57	114	91	91	84	89	106	73	114	Claremont-Lebanon, NH-VT (McrSA)	19	11	3	10	28	6	37	45	60	71
Iron Mountain, MI-WI (McrSA)	99	139	148	184	206	188	254	307	325	323	Clarksburg, WV (McrSA)	86	82	31	19	9	52	85	43	94	132
Madisonville, KY (McrSA)	100	122	159	156	137	97	129	176	195	269	Clarksdale, MS (McrSA)	547	547	543	533	463	513	563	566	567	569
Pella, IA (McrSA)	101	147	251	na	na	na	na	na	na	na	Clearlake, CA (McrSA)	135	200	279	340	339	309	313	253	198	144
Burley, ID (McrSA)	102	119	161	256	346	446	487	503	444	416	Cleveland, MS (McrSA)	523	489	449	463	408	412	484	491	530	548
Cambridge, OH (McrSA)	103	77	39	120	183	267	323	357	438	493	Clewiston, FL (McrSA)	526	519	530	522	507	533	567	549	477	417
Butte-Silver Bow, MT (McrSA)	104	129	100	44	8	15	17	25	17	27	Clinton, IA (McrSA)	276	272	296	217	172	116	105	112	128	127
Kearney, NE (McrSA)	105	92	56	142	148	161	127	130	200	270	Clovis, NM (McrSA)	112	162	96	30	31	29	39	110	217	280
Port Angeles, WA (McrSA)	106	164	231	212	166	144	162	148	86	93	Coffeyville, KS (McrSA)	462	440	367	297	255	329	348	358	396	442
Effingham, IL (McrSA)	107	165	99	36	73	47	102	153	202	212	Coldwater, MI (McrSA)	419	478	497	499	509	514	519	531	511	440
Columbus, MS (McrSA)	108	56	40	39	10	11	24	46	57	77	Columbus, MS (McrSA)	108	56	40	39	10	11	24	46	57	77
Hilo, HI (McrSA)	109	115	171	172	168	169	114	49	113	125	Columbus, NE (McrSA)	79	125	81	97	65	106	46	59	83	152
Tupelo, MS (McrSA)	110	53	62	79	71	32	56	65	104	124	Concord, NH (McrSA)	63	61	55	4	25	1	1	1	4	8
Lock Haven, PA (McrSA)	111	135	116	90	64	87	113	173	181	233	Connorsville, IN (McrSA)	531	529	512	527	519	528	553	534	538	533
Clovis, NM (McrSA)	112	162	96	30	31	29	39	110	217	280	Cookeville, TN (McrSA)	39	31	83	102	122	79	149	116	145	175
Bennington, VT (McrSA)	113	143	175	218	209	176	198	131	144	95	Coos Bay, OR (McrSA)	78	191	267	326	362	315	375	320	258	299
Muscatine, IA (McrSA)	114	108	93	21	63	68	120	119	141	119	Cordele, GA (McrSA)	524	530	538	524	523	527	562	560	551	557

551 Micropolitan Areas	2019	2018	2017	2016	2015	2014	2013	2012	2011	2010	551 Micropolitan Areas	2019	2018	2017	2016	2015	2014	2013	2012	2011	2010
Alexandria, MN (McrSA)	115	114	203	240	309	264	298	328	238	186	Corinth, MS (McrSA)	361	378	413	371	335	257	257	283	322	345
Fremont, NE (McrSA)	116	78	134	143	57	62	70	89	155	198	Cornelia, GA (McrSA)	421	418	478	461	473	473	462	450	431	396
Gardnerville Ranchos, NV (McrSA)	117	201	298	372	341	306	242	184	126	76	Corning, NY (McrSA)	290	316	236	169	167	241	302	234	231	236
Norfolk, NE (McrSA)	118	151	140	179	119	165	209	265	334	409	Corsicana, TX (McrSA)	422	352	226	226	235	288	333	380	409	455
Sonora, CA (McrSA)	119	171	254	331	307	245	228	174	90	39	Cortland, NY (McrSA)	247	189	91	119	198	268	356	401	428	428
Hudson, NY (McrSA)	120	58	74	123	133	163	227	221	299	285	Coshocton, OH (McrSA)	481	437	354	408	420	440	501	501	504	457
Watertown-Fort Atkinson, WI (McrSA)	121	74	75	152	153	125	111	120	74	22	Craig, CO (McrSA)	241	278	323	253	158	99	na	na	na	na
Seneca, SC (McrSA)	122	174	272	275	349	316	294	276	254	228	Crawfordsville, IN (McrSA)	347	268	349	424	452	463	422	367	415	336
Amsterdam, NY (McrSA)	123	144	195	176	147	173	237	247	270	244	Crescent City, CA (McrSA)	223	288	350	420	366	261	331	321	234	224
Wisconsin Rapids-Marshfield, WI (McrSA)	124	183	222	162	77	56	55	73	51	43	Crossville, TN (McrSA)	195	186	244	238	280	244	332	343	253	210
Morehead City, NC (McrSA)	125	208	294	332	282	202	186	140	132	147	Cullman, AL (McrSA)	82	116	229	224	291	359	415	407	423	374
McPherson, KS (McrSA)	126	128	37	83	142	204	272	279	224	213	Cullowhee, NC (McrSA)	360	338	407	444	416	421	na	na	na	na
Brainerd, MN (McrSA)	127	97	185	262	334	370	345	369	337	273	Danville, KY (McrSA)	427	376	380	452	446	364	310	373	442	456
Manitowoc, WI (McrSA)	128	73	85	121	123	107	97	147	151	74	Danville, VA (McrSA)	430	390	462	464	388	433	na	na	na	na
Merrill, WI (McrSA)	129	118	227	291	273	238	184	169	158	117	Dayton, TN (McrSA)	327	396	434	441	443	401	na	na	na	na
Fort Dodge, IA (McrSA)	130	89	125	197	138	124	152	155	167	107	Decatur, IN (McrSA)	201	264	337	426	495	516	569	571	576	543
Bemidji, MN (McrSA)	131	185	283	336	328	282	308	271	240	316	Defiance, OH (McrSA)	258	199	269	191	232	235	247	282	312	247
Dodge City, KS (McrSA)	132	136	160	113	27	21	50	62	118	167	Del Rio, TX (McrSA)	188	71	68	85	90	36	27	40	136	194
Gloversville, NY (McrSA)	133	182	248	250	184	178	196	210	225	253	Deming, NM (McrSA)	529	459	360	272	182	197	189	240	323	391
Winnemucca, NV (McrSA)	134	217	138	52	4	8	na	na	na	na	DeRidder, LA (McrSA)	444	408	327	242	318	277	285	262	328	392
Clearlake, CA (McrSA)	135	200	279	340	339	309	313	253	198	144	Dickinson, ND (McrSA)	30	10	1	1	1	5	8	16	108	177
Norwalk, OH (McrSA)	136	95	162	243	269	208	276	314	289	272	Dixon, IL (McrSA)	304	369	346	292	262	294	234	272	348	379
Rolla, MO (McrSA)	137	130	189	174	106	71	116	139	180	225	Dodge City, KS (McrSA)	132	136	160	113	27	21	50	62	118	167
Borger, TX (McrSA)	138	196	193	147	193	321	419	371	362	371	Douglas, GA (McrSA)	480	461	493	491	505	512	534	497	515	488
Frankfort, KY (McrSA)	139	85	117	167	98	131	86	60	119	126	Dublin, GA (McrSA)	377	386	482	443	427	358	303	280	294	293
Gillette, WY (McrSA)	140	93	26	11	34	13	12	4	3	2	DuBois, PA (McrSA)	330	289	240	195	199	132	165	226	220	288
Greensburg, IN (McrSA)	141	142	210	286	358	335	328	374	370	294	Dumas, TX (McrSA)	170	160	73	60	52	136	128	78	115	142
Faribault-Northfield, MN (McrSA)	142	123	197	158	181	100	73	77	46	68	Duncan, OK (McrSA)	334	350	165	116	205	265	330	375	332	278
Kill Devil Hills, NC (McrSA)	143	169	264	349	324	256	316	251	194	145	Dunn, NC (McrSA)	257	279	356	400	382	352	322	311	265	222
Fremont, OH (McrSA)	144	81	78	112	96	146	208	208	272	251	Durango, CO (McrSA)	47	7	16	7	42	18	13	6	1	3
Ada, OK (McrSA)	145	211	183	199	275	237	309	361	341	362	Durant, OK (McrSA)	93	124	212	170	197	270	312	237	249	367
Mason City, IA (McrSA)	146	105	76	160	79	148	211	217	283	266	Dyersburg, TN (McrSA)	184	234	188	233	222	278	362	337	376	333
Boone, NC (McrSA)	147	223	305	285	194	122	139	157	105	116	Eagle Pass, TX (McrSA)	249	213	149	209	238	251	267	291	359	369
Wilmington, OH (McrSA)	148	195	290	276	265	215	287	256	193	130	Easton, MD (McrSA)	45	24	46	58	50	22	74	84	42	25
Athens, OH (McrSA)	149	127	156	206	114	159	221	193	246	310	Edwards, CO (McrSA)	7	8	28	69	108	128	90	50	9	1
Bardstown, KY (McrSA)	150	193	194	155	130	76	na	na	na	na	Effingham, IL (McrSA)	107	165	99	36	73	47	102	153	202	212
Ottawa, KS (McrSA)	151	202	286	359	370	402	na	na	na	na	El Campo, TX (McrSA)	380	301	205	171	243	305	373	410	358	319
Auburn, IN (McrSA)	152	99	196	288	367	388	360	386	318	277	El Dorado, AR (McrSA)	354	274	215	201	160	200	166	178	100	158
Shelton, WA (McrSA)	153	222	304	298	254	260	204	128	44	60	Elizabeth City, NC (McrSA)	358	380	373	341	266	194	251	211	161	179



551 Micropolitan Areas	2019	2018	2017	2016	2015	2014	2013	2012	2011	2010	551 Micropolitan Areas	2019	2018	2017	2016	2015	2014	2013	2012	2011	2010
Platteville, WI (McrSA)	154	154	152	135	164	253	321	325	392	352	Elk City, OK (McrSA)	182	87	30	6	12	58	119	163	111	168
Madison, IN (McrSA)	155	132	173	259	267	291	340	368	382	303	Elkins, WV (McrSA)	369	332	318	283	191	140	na	na	na	na
Warsaw, IN (McrSA)	156	141	59	106	139	203	271	342	309	227	Elko, NV (McrSA)	72	43	51	26	11	42	38	13	35	59
North Platte, NE (McrSA)	157	121	70	110	75	38	32	52	98	137	Ellensburg, WA (McrSA)	10	34	88	49	41	35	36	37	32	26
Hobbs, NM (McrSA)	158	205	77	34	101	157	246	216	169	170	Emporia, KS (McrSA)	416	425	457	477	465	413	455	444	510	523
Newport, OR (McrSA)	159	230	306	380	368	312	na	na	na	na	Enterprise, AL (McrSA)	246	310	220	177	134	89	30	28	48	88
Hutchinson, MN (McrSA)	160	215	200	279	311	263	329	306	243	201	Escanaba, MI (McrSA)	313	366	401	379	333	271	264	303	298	359
Pottsville, PA (McrSA)	161	158	143	127	120	115	168	207	182	207	Espanola, NM (McrSA)	545	546	548	534	530	511	466	402	327	300
Big Spring, TX (McrSA)	162	159	122	117	226	310	403	403	346	399	Eufaula, AL-GA (McrSA)	541	534	532	na	na	na	na	na	na	na
Rutland, VT (McrSA)	163	197	218	223	192	142	193	188	215	199	Eureka-Arcata-Fortuna, CA (McrSA)	8	83	144	159	162	135	147	137	79	49
Ashland, OH (McrSA)	164	176	249	312	331	347	355	350	363	318	Evanston, WY (McrSA)	372	330	297	254	213	154	98	47	15	11
Los Alamos, NM (McrSA)	165	102	204	236	159	143	130	101	116	89	Fairfield, IA (McrSA)	391	355	425	453	502	497	na	na	na	na
Ottumwa, IA (McrSA)	166	133	168	230	223	295	364	347	296	286	Fairmont, MN (McrSA)	443	428	459	na	na	na	na	na	na	na
Ozark, AL (McrSA)	167	179	181	137	72	57	30	28	48	88	Fairmont, WV (McrSA)	310	219	129	59	3	26	60	14	68	92
Olean, NY (McrSA)	168	103	115	134	61	67	67	92	109	143	Fallon, NV (McrSA)	221	263	338	235	212	181	136	107	103	56
Moscow, ID (McrSA)	169	184	278	358	434	415	439	382	302	330	Faribault-Northfield, MN (McrSA)	142	123	197	158	181	100	73	77	46	68
Dumas, TX (McrSA)	170	160	73	60	52	136	128	78	115	142	Farmington, MO (McrSA)	320	341	364	363	314	243	212	201	226	265
Bellefontaine, OH (McrSA)	171	98	111	115	208	193	282	245	242	229	Fergus Falls, MN (McrSA)	200	250	239	309	364	332	382	463	385	312
Indiana, PA (McrSA)	172	180	87	25	5	9	21	32	54	100	Fernley, NV (McrSA)	381	447	382	302	279	303	301	259	166	98
Zanesville, OH (McrSA)	173	131	199	257	276	231	199	268	316	322	Findlay, OH (McrSA)	23	28	24	29	15	50	35	44	80	118
Menomonie, WI (McrSA)	174	187	170	109	94	51	103	162	196	174	Fitzgerald, GA (McrSA)	550	541	551	536	535	532	575	574	569	572
Wilson, NC (McrSA)	175	177	182	107	92	64	61	72	69	52	Forest City, NC (McrSA)	540	535	540	526	524	510	532	505	426	351
Marietta, OH (McrSA)	176	110	95	128	224	211	na	na	na	na	Forrest City, AR (McrSA)	538	532	544	515	480	435	378	431	481	450
Kerrville, TX (McrSA)	177	109	84	71	81	55	62	67	65	51	Fort Dodge, IA (McrSA)	130	89	125	197	138	124	152	155	167	107
Spirit Lake, IA (McrSA)	178	100	112	198	257	228	291	359	377	305	Fort Leonard Wood, MO (McrSA)	346	327	219	125	37	28	14	63	146	217
Muskogee, OK (McrSA)	179	163	128	75	82	73	112	136	177	250	Fort Madison-Keokuk, IA-IL-MO (McrSA)	353	306	336	366	429	405	346	332	389	372
Boone, IA (McrSA)	180	138	198	267	308	307	359	409	367	381	Fort Morgan, CO (McrSA)	243	299	232	157	127	214	164	215	229	258
Ardmore, OK (McrSA)	181	134	66	38	100	127	194	165	172	192	Fort Payne, AL (McrSA)	528	526	533	na	na	na	na	na	na	na
Elk City, OK (McrSA)	182	87	30	6	12	58	119	163	111	168	Fort Polk South, LA (McrSA)	273	258	158	78	33	37	23	30	67	169
Bartlesville, OK (McrSA)	183	153	64	18	60	93	153	167	197	242	Frankfort, IN (McrSA)	483	454	463	427	438	422	448	481	403	434
Dyersburg, TN (McrSA)	184	234	188	233	222	278	362	337	376	333	Frankfort, KY (McrSA)	139	85	117	167	98	131	86	60	119	126
Starkville, MS (McrSA)	185	137	154	229	216	195	190	182	150	120	Fredericksburg, TX (McrSA)	57	19	50	86	104	78	94	104	106	106
Athens, TN (McrSA)	186	244	320	315	327	275	351	335	331	329	Freeport, IL (McrSA)	370	416	420	432	402	346	295	313	290	259
Nogales, AZ (McrSA)	187	226	169	210	245	189	239	181	189	161	Fremont, NE (McrSA)	116	78	134	143	57	62	70	89	155	198
Del Rio, TX (McrSA)	188	71	68	85	90	36	27	40	136	194	Fremont, OH (McrSA)	144	81	78	112	96	146	208	208	272	251
Scottsbluff, NE (McrSA)	189	112	131	50	55	44	28	24	43	99	Gaffney, SC (McrSA)	402	469	456	455	424	390	394	377	386	368
Lake City, FL (McrSA)	190	150	241	294	300	223	170	108	91	104	Gainesville, TX (McrSA)	264	206	113	96	185	206	265	249	186	110
Spencer, IA (McrSA)	191	198	105	168	145	119	156	185	278	203	Galesburg, IL (McrSA)	448	357	355	412	397	387	451	466	493	503
Marshalltown, IA (McrSA)	192	113	224	305	248	205	222	202	159	166	Gallup, NM (McrSA)	517	512	517	508	445	393	436	396	414	480
Moberly, MO (McrSA)	193	233	184	101	132	150	215	286	372	360	Garden City, KS (McrSA)	207	224	228	232	186	273	226	183	239	191

551 Micropolitan Areas	2019	2018	2017	2016	2015	2014	2013	2012	2011	2010	551 Micropolitan Areas	2019	2018	2017	2016	2015	2014	2013	2012	2011	2010
Roseburg, OR (McrSA)	194	260	329	370	390	398	393	362	276	264	Gardnerville Ranchos, NV (McrSA)	117	201	298	372	341	306	242	184	126	76
Crossville, TN (McrSA)	195	186	244	238	280	244	332	343	253	210	Georgetown, SC (McrSA)	285	362	288	183	229	266	259	206	137	115
Richmond-Berea, KY (McrSA)	196	168	166	154	111	177	229	284	364	427	Gillette, WY (McrSA)	140	93	26	11	34	13	12	4	3	2
Auburn, NY (McrSA)	197	148	104	80	87	138	207	246	245	208	Glasgow, KY (McrSA)	492	462	450	501	522	507	521	545	528	515
Carroll, IA (McrSA)	198	216	247	na	na	na	na	na	na	na	Glenwood Springs, CO (McrSA)	53	80	106	81	84	82	na	na	na	na
Susanville, CA (McrSA)	199	221	321	274	195	145	95	61	62	69	Gloversville, NY (McrSA)	133	182	248	250	184	178	196	210	225	253
Fergus Falls, MN (McrSA)	200	250	239	309	364	332	382	463	385	312	Grand Rapids, MN (McrSA)	384	293	190	na	na	na	na	na	na	na
Decatur, IN (McrSA)	201	264	337	426	495	516	569	571	576	543	Grants, NM (McrSA)	446	477	496	482	447	428	423	388	447	405
Huron, SD (McrSA)	202	261	268	290	240	187	252	241	287	255	Great Bend, KS (McrSA)	383	348	293	252	322	319	383	333	369	292
Stillwater, OK (McrSA)	203	145	72	12	53	110	171	205	295	260	Greeneville, TN (McrSA)	404	347	372	415	484	469	464	458	387	279
Kendallville, IN (McrSA)	204	269	292	355	432	485	507	515	458	382	Greenfield Town, MA (McrSA)	65	66	89	139	83	74	na	na	na	na
Ruston, LA (McrSA)	205	188	97	41	23	39	65	19	76	105	Greensburg, IN (McrSA)	141	142	210	286	358	335	328	374	370	294
Canon City, CO (McrSA)	206	203	274	360	325	284	241	227	175	121	Greenville, MS (McrSA)	515	514	507	511	515	491	548	563	561	559
Garden City, KS (McrSA)	207	224	228	232	186	273	226	183	239	191	Greenville, OH (McrSA)	288	318	312	260	286	355	418	455	451	377
Wahpeton, ND-MN (McrSA)	208	210	225	303	315	362	397	417	418	364	Greenwood, MS (McrSA)	522	523	490	402	359	289	372	390	455	451
Junction City, KS (McrSA)	209	172	136	87	29	59	na	na	na	na	Greenwood, SC (McrSA)	253	302	363	369	298	323	327	304	230	283
Lewisburg, TN (McrSA)	210	300	398	405	486	459	493	490	453	370	Grenada, MS (McrSA)	473	456	483	487	510	492	531	488	549	536
Stephenville, TX (McrSA)	211	285	310	321	371	372	417	437	416	410	Guymon, OK (McrSA)	307	218	124	200	241	353	424	376	446	439
Watertown, SD (McrSA)	212	209	163	221	140	171	231	186	170	197	Hailey, ID (McrSA)	85	117	139	222	170	221	na	na	na	na
Burlington, IA-IL (McrSA)	213	175	191	270	207	262	213	150	228	193	Hannibal, MO (McrSA)	237	298	342	317	225	299	352	339	429	481
Port Clinton, OH (McrSA)	214	228	164	99	125	182	na	na	na	na	Harrison, AR (McrSA)	395	388	429	350	285	213	289	278	375	376
Steamboat Springs, CO (McrSA)	215	207	119	54	78	139	na	na	na	na	Hastings, NE (McrSA)	259	247	263	269	174	217	243	298	397	452
Calhoun, GA (McrSA)	216	281	271	334	383	361	391	363	352	307	Hays, KS (McrSA)	271	229	142	161	177	191	248	260	165	157
Paragould, AR (McrSA)	217	166	216	308	380	382	446	446	471	424	Heber, UT (McrSA)	34	65	157	239	313	328	280	230	233	180
Aberdeen, WA (McrSA)	218	337	369	409	426	407	363	318	237	190	Helena, MT (McrSA)	49	54	38	8	14	3	2	2	2	6
Worthington, MN (McrSA)	219	245	275	352	277	212	218	243	168	96	Helena-West Helena, AR (McrSA)	551	550	545	532	529	530	559	551	571	575
St. Marys, GA (McrSA)	220	286	201	187	230	225	202	154	143	173	Henderson, NC (McrSA)	510	481	510	488	478	448	474	452	434	430
Fallon, NV (McrSA)	221	263	338	235	212	181	136	107	103	56	Hereford, TX (McrSA)	434	419	341	300	344	377	438	496	507	510
Centralia, WA (McrSA)	222	280	276	277	332	320	337	294	260	295	Hermiston-Pendleton, OR (McrSA)	58	35	47	68	62	92	69	88	77	129
Crescent City, CA (McrSA)	223	288	350	420	366	261	331	321	234	224	Hillsdale, MI (McrSA)	435	436	476	474	492	506	na	na	na	na
Chillicothe, OH (McrSA)	224	161	243	322	321	259	214	198	257	308	Hilo, HI (McrSA)	109	115	171	172	168	169	114	49	113	125
Sayre, PA (McrSA)	225	155	69	35	26	40	87	135	191	256	Hobbs, NM (McrSA)	158	205	77	34	101	157	246	216	169	170
Palestine, TX (McrSA)	226	167	237	164	236	166	135	189	207	245	Holland, MI (McrSA)	68	126	126	194	261	336	na	na	na	na
Bay City, TX (McrSA)	227	194	242	306	352	409	476	439	485	504	Hood River, OR (McrSA)	4	39	133	214	260	209	274	239	199	226
Brenham, TX (McrSA)	228	152	65	57	48	65	118	97	38	58	Hope, AR (McrSA)	543	537	534	na	na	na	na	na	na	na
Cambridge, MD (McrSA)	229	265	295	354	272	304	370	427	433	421	Houghton, MI (McrSA)	367	389	418	399	387	429	488	484	475	501
Storm Lake, IA (McrSA)	230	204	109	89	149	190	244	261	350	380	Hudson, NY (McrSA)	120	58	74	123	133	163	227	221	299	285



551 Micropolitan Areas	2019	2018	2017	2016	2015	2014	2013	2012	2011	2010	551 Micropolitan Areas	2019	2018	2017	2016	2015	2014	2013	2012	2011	2010
Ottawa-Peru, IL (McrSA)	231	273	282	255	202	180	133	166	201	146	Huntingdon, PA (McrSA)	312	295	287	328	337	331	311	297	263	276
Montrose, CO (McrSA)	232	291	368	365	299	236	182	114	31	14	Huntington, IN (McrSA)	457	441	445	433	491	502	510	547	537	513
Marquette, MI (McrSA)	233	276	319	211	200	137	191	197	152	204	Huntsville, TX (McrSA)	262	220	214	146	116	117	176	254	333	418
Weatherford, OK (McrSA)	234	232	132	65	143	210	299	383	319	262	Huron, SD (McrSA)	202	261	268	290	240	187	252	241	287	255
Port Lavaca, TX (McrSA)	235	156	61	51	113	113	na	na	na	na	Hutchinson, KS (McrSA)	289	270	266	237	210	199	263	270	266	331
Ogdensburg-Massena, NY (McrSA)	236	192	180	104	88	111	173	224	206	209	Hutchinson, MN (McrSA)	160	215	200	279	311	263	329	306	243	201
Hannibal, MO (McrSA)	237	298	342	317	225	299	352	339	429	481	Indiana, PA (McrSA)	172	180	87	25	5	9	21	32	54	100
Woodward, OK (McrSA)	238	290	167	95	157	232	293	292	275	240	Indianola, MS (McrSA)	549	545	546	535	520	519	572	570	568	573
Batesville, AR (McrSA)	239	271	348	329	274	247	307	290	373	344	Ionia, MI (McrSA)	466	507	465	435	462	442	na	na	na	na
Seneca Falls, NY (McrSA)	240	214	273	213	220	158	185	190	232	291	Iron Mountain, MI-WI (McrSA)	99	139	148	184	206	188	254	307	325	323
Craig, CO (McrSA)	241	278	323	253	158	99	na	na	na	na	Jackson, OH (McrSA)	357	333	387	339	310	248	na	na	na	na
Troy, AL (McrSA)	242	326	265	192	233	216	284	263	255	215	Jackson, WY-ID (McrSA)	12	63	71	20	38	61	59	36	20	10
Fort Morgan, CO (McrSA)	243	299	232	157	127	214	164	215	229	258	Jacksonville, IL (McrSA)	412	395	362	416	391	379	388	391	413	467
Meadville, PA (McrSA)	244	238	208	293	340	340	399	459	379	389	Jacksonville, TX (McrSA)	477	413	384	337	398	411	396	414	467	519
Statesboro, GA (McrSA)	245	267	347	324	351	330	334	301	354	406	Jamestown, ND (McrSA)	95	50	108	108	109	103	160	144	187	282
Enterprise, AL (McrSA)	246	310	220	177	134	89	30	28	48	88	Jamestown-Dunkirk-Fredonia, NY (McrSA)	277	266	314	346	312	334	414	424	384	365
Cortland, NY (McrSA)	247	189	91	119	198	268	356	401	428	428	Jasper, IN (McrSA)	67	20	21	27	69	120	108	145	96	91
Sanford, NC (McrSA)	248	243	331	307	218	168	140	126	121	81	Jefferson, GA (McrSA)	87	181	221	151	231	185	na	na	na	na
Eagle Pass, TX (McrSA)	249	213	149	209	238	251	267	291	359	369	Jennings, LA (McrSA)	445	434	378	na	na	na	na	na	na	na
Branson, MO (McrSA)	250	308	345	361	403	350	286	281	219	155	Jesup, GA (McrSA)	456	443	432	398	329	308	339	295	244	202
Riverton, WY (McrSA)	251	173	94	64	66	70	49	71	71	111	Junction City, KS (McrSA)	209	172	136	87	29	59	na	na	na	na
Sandusky, OH (McrSA)	252	314	217	145	117	91	na	na	na	na	Juneau, AK (McrSA)	48	45	42	22	7	34	16	64	127	72
Greenwood, SC (McrSA)	253	302	363	369	298	323	327	304	230	283	Kalispell, MT (McrSA)	14	69	102	100	151	149	142	87	45	35
Sweetwater, TX (McrSA)	254	255	277	264	263	327	381	465	425	472	Kapaa, HI (McrSA)	25	9	52	131	169	170	178	98	135	148
Sunbury, PA (McrSA)	255	254	325	301	271	296	350	315	301	353	Kearney, NE (McrSA)	105	92	56	142	148	161	127	130	200	270
Mount Pleasant, MI (McrSA)	256	257	333	289	343	326	353	305	204	234	Keene, NH (McrSA)	50	32	29	28	59	24	42	51	72	50
Dunn, NC (McrSA)	257	279	356	400	382	352	322	311	265	222	Kendallville, IN (McrSA)	204	269	292	355	432	485	507	515	458	382
Defiance, OH (McrSA)	258	199	269	191	232	235	247	282	312	247	Kennett, MO (McrSA)	548	540	536	507	511	521	561	567	573	570
Hastings, NE (McrSA)	259	247	263	269	174	217	243	298	397	452	Kerrville, TX (McrSA)	177	109	84	71	81	55	62	67	65	51
Warrensburg, MO (McrSA)	260	323	258	175	179	272	256	235	291	354	Ketchikan, AK (McrSA)	37	16	22	43	46	53	64	75	138	101
Big Rapids, MI (McrSA)	261	311	409	377	412	417	416	406	482	524	Key West, FL (McrSA)	56	17	43	103	155	123	93	99	61	40
Huntsville, TX (McrSA)	262	220	214	146	116	117	176	254	333	418	Kill Devil Hills, NC (McrSA)	143	169	264	349	324	256	316	251	194	145
Austin, MN (McrSA)	263	178	213	190	247	186	203	196	250	221	Kingsville, TX (McrSA)	348	252	147	163	190	179	151	117	171	235
Gainesville, TX (McrSA)	264	206	113	96	185	206	265	249	186	110	Kinston, NC (McrSA)	375	404	448	434	372	338	395	408	339	338
Brownwood, TX (McrSA)	265	237	238	299	259	242	233	222	285	346	Kirksville, MO (McrSA)	471	487	500	436	369	360	387	360	452	512
New Ulm, MN (McrSA)	266	275	245	310	326	368	430	430	374	315	Klamath Falls, OR (McrSA)	303	363	410	393	379	366	389	353	282	214
Marshall, MN (McrSA)	267	309	270	207	152	105	163	171	149	219	Laconia, NH (McrSA)	13	13	6	45	43	48	43	35	63	75
Malone, NY (McrSA)	268	212	262	203	136	85	132	115	125	141	La Grande, OR (McrSA)	326	335	377	445	389	410	445	433	381	412
St. Marys, PA (McrSA)	269	329	352	na	na	na	na	na	na	na	LaGrange, GA (McrSA)	96	107	90	63	51	33	40	79	55	73
Pontiac, IL (McrSA)	270	262	207	280	211	224	296	289	338	271	Lake City, FL (McrSA)	190	150	241	294	300	223	170	108	91	104

551 Micropolitan Areas	2019	2018	2017	2016	2015	2014	2013	2012	2011	2010	551 Micropolitan Areas	2019	2018	2017	2016	2015	2014	2013	2012	2011	2010
Hays, KS (McrSA)	271	229	142	161	177	191	248	260	165	157	Lamesa, TX (McrSA)	460	426	375	347	404	483	545	558	574	574
Lexington, NE (McrSA)	272	283	357	282	252	343	405	364	456	514	Laramie, WY (McrSA)	84	44	60	129	74	108	75	96	81	138
Fort Polk South, LA (McrSA)	273	258	158	78	33	37	23	30	67	169	Las Vegas, NM (McrSA)	546	542	550	490	422	374	429	411	402	419
Uvalde, TX (McrSA)	274	157	137	216	228	254	260	326	412	471	Laurel, MS (McrSA)	385	339	177	105	85	41	63	66	88	134
Albemarle, NC (McrSA)	275	334	433	454	441	426	443	421	390	343	Laurinburg, NC (McrSA)	507	510	516	523	521	501	481	475	491	482
Clinton, IA (McrSA)	276	272	296	217	172	116	105	112	128	127	Lawrenceburg, TN (McrSA)	324	370	423	462	476	480	537	525	529	509
Jamestown-Dunkirk-Fredonia, NY (McrSA)	277	266	314	346	312	334	414	424	384	365	Lebanon, MO (McrSA)	317	345	390	384	421	380	441	454	483	400
Shawano, WI (McrSA)	278	240	253	249	203	276	na	na	na	na	Levelland, TX (McrSA)	352	361	291	287	348	420	502	538	555	529
Owatonna, MN (McrSA)	279	328	317	231	214	164	216	203	157	97	Lewisburg, PA (McrSA)	3	2	10	40	21	27	26	39	78	150
Bonham, TX (McrSA)	280	297	324	na	na	na	na	na	na	na	Lewisburg, TN (McrSA)	210	300	398	405	486	459	493	490	453	370
Warren, PA (McrSA)	281	248	151	180	258	333	304	340	308	373	Lewistown, PA (McrSA)	76	120	110	76	97	101	131	158	216	243
Albert Lea, MN (McrSA)	282	319	256	258	323	281	341	385	343	263	Lexington, NE (McrSA)	272	283	357	282	252	343	405	364	456	514
Talladega-Sylacauga, AL (McrSA)	283	259	322	284	361	408	401	310	208	133	Liberal, KS (McrSA)	328	375	260	182	154	229	180	164	190	189
Vincennes, IN (McrSA)	284	227	223	178	251	258	249	257	279	309	Lincoln, IL (McrSA)	478	495	491	486	468	461	458	511	533	525
Georgetown, SC (McrSA)	285	362	288	183	229	266	259	206	137	115	Lock Haven, PA (McrSA)	111	135	116	90	64	87	113	173	181	233
Marion, OH (McrSA)	286	336	335	244	237	246	217	220	268	218	Logan, WV (McrSA)	535	538	521	480	400	365	na	na	na	na
Mountain Home, ID (McrSA)	287	253	328	330	306	314	255	232	241	248	Logansport, IN (McrSA)	485	473	428	447	490	481	478	499	492	445
Greenville, OH (McrSA)	288	318	312	260	286	355	418	455	451	377	London, KY (McrSA)	389	354	402	356	289	218	175	242	251	302
Hutchinson, KS (McrSA)	289	270	266	237	210	199	263	270	266	331	Los Alamos, NM (McrSA)	165	102	204	236	159	143	130	101	116	89
Corning, NY (McrSA)	290	316	236	169	167	241	302	234	231	236	Ludington, MI (McrSA)	393	367	447	403	479	505	na	na	na	na
Sedalia, MO (McrSA)	291	277	235	266	302	269	268	273	329	350	Lufkin, TX (McrSA)	343	241	187	273	221	151	181	133	122	61
Othello, WA (McrSA)	292	284	284	318	295	381	na	na	na	na	Lumberton, NC (McrSA)	470	494	492	504	500	486	460	443	432	454
Richmond, IN (McrSA)	293	303	289	338	384	400	459	486	405	332	Macomb, IL (McrSA)	431	445	392	419	373	363	357	392	430	517
Pahrump, NV (McrSA)	294	358	426	342	317	349	344	365	306	241	Madison, IN (McrSA)	155	132	173	259	267	291	340	368	382	303
Snyder, TX (McrSA)	295	170	98	94	176	293	386	423	421	484	Madisonville, KY (McrSA)	100	122	159	156	137	97	129	176	195	269
Opelousas, LA (McrSA)	296	242	146	74	58	46	92	123	112	176	Magnolia, AR (McrSA)	516	517	488	451	469	427	453	472	398	317
Sandpoint, ID (McrSA)	297	374	446	410	406	389	na	na	na	na	Malone, NY (McrSA)	268	212	262	203	136	85	132	115	125	141
Nacogdoches, TX (McrSA)	298	249	209	165	150	201	219	229	305	398	Malvern, AR (McrSA)	514	505	498	471	475	437	na	na	na	na
Vernal, UT (McrSA)	299	256	174	166	242	198	270	269	185	160	Manitowoc, WI (McrSA)	128	73	85	121	123	107	97	147	151	74
New Castle, PA (McrSA)	300	251	178	144	124	88	124	172	174	181	Marietta, OH (McrSA)	176	110	95	128	224	211	na	na	na	na
Altus, OK (McrSA)	301	320	299	225	294	279	266	252	292	361	Marinette, WI-MI (McrSA)	363	331	300	251	319	297	326	370	304	238
Mount Airy, NC (McrSA)	302	342	411	479	477	416	470	467	440	426	Marion, IN (McrSA)	364	322	309	351	347	292	305	352	378	438
Klamath Falls, OR (McrSA)	303	363	410	393	379	366	389	353	282	214	Marion, NC (McrSA)	432	451	479	500	504	495	na	na	na	na
Dixon, IL (McrSA)	304	369	346	292	262	294	234	272	348	379	Marion, OH (McrSA)	286	336	335	244	237	246	217	220	268	218
Pecos, TX (McrSA)	305	307	326	390	460	503	558	539	540	565	Marquette, MI (McrSA)	233	276	319	211	200	137	191	197	152	204
Ponca City, OK (McrSA)	306	231	280	281	336	371	431	389	419	366	Marshall, MN (McrSA)	267	309	270	207	152	105	163	171	149	219
Guymon, OK (McrSA)	307	218	124	200	241	353	424	376	446	439	Marshall, MO (McrSA)	482	479	467	404	425	464	435	476	518	547
Sulphur Springs, TX (McrSA)	308	225	145	88	115	196	269	308	383	436	Marshall, TX (McrSA)	309	235	135	72	45	63	88	102	50	62
Marshall, TX (McrSA)	309	235	135	72	45	63	88	102	50	62	Marshalltown, IA (McrSA)	192	113	224	305	248	205	222	202	159	166
Fairmont, WV (McrSA)	310	219	129	59	3	26	60	14	68	92	Martin, TN (McrSA)	349	422	427	449	457	471	471	512	513	499
Cedar City, UT (McrSA)	311	410	416	362	439	450	490	428	360	337	Martinsville, VA (McrSA)	513	504	519	512	483	526	564	530	532	520

551 Micropolitan Areas	2019	2018	2017	2016	2015	2014	2013	2012	2011	2010	551 Micropolitan Areas	2019	2018	2017	2016	2015	2014	2013	2012	2011	2010
Huntingdon, PA (McrSA)	312	295	287	328	337	331	311	297	263	276	Maryville, MO (McrSA)	497	464	470	481	430	456	491	514	520	546
Escanaba, MI (McrSA)	313	366	401	379	333	271	264	303	298	359	Mason City, IA (McrSA)	146	105	76	160	79	148	211	217	283	266
Thomasville, GA (McrSA)	314	296	261	188	128	153	187	199	184	230	Mayfield, KY (McrSA)	499	501	502	505	485	500	529	561	559	561
Rexburg, ID (McrSA)	315	282	351	391	423	458	447	399	326	327	Maysville, KY (McrSA)	387	379	332	386	405	454	524	485	544	490
Somerset, PA (McrSA)	316	365	358	319	281	286	273	327	315	358	McAlester, OK (McrSA)	398	313	202	118	105	83	82	76	64	159
Lebanon, MO (McrSA)	317	345	390	384	421	380	441	454	483	400	McComb, MS (McrSA)	527	527	443	439	498	487	482	416	459	422
Tiffin, OH (McrSA)	318	287	308	311	287	230	279	277	281	239	McMinnville, TN (McrSA)	428	393	472	430	454	462	530	473	424	342
Tifton, GA (McrSA)	319	246	186	228	264	226	290	309	223	297	McPherson, KS (McrSA)	126	128	37	83	142	204	272	279	224	213
Farmington, MO (McrSA)	320	341	364	363	314	243	212	201	226	265	Meadville, PA (McrSA)	244	238	208	293	340	340	399	459	379	389
Ontario, OR-ID (McrSA)	321	373	374	446	409	441	461	507	464	437	Menomonie, WI (McrSA)	174	187	170	109	94	51	103	162	196	174
Pampa, TX (McrSA)	322	236	130	122	173	250	318	336	264	267	Meridian, MS (McrSA)	341	317	285	196	118	175	148	138	147	131
Waycross, GA (McrSA)	323	353	417	406	433	391	420	393	311	375	Merrill, WI (McrSA)	129	118	227	291	273	238	184	169	158	117
Lawrenceburg, TN (McrSA)	324	370	423	462	476	480	537	525	529	509	Mexico, MO (McrSA)	331	384	361	343	392	430	473	478	524	468
Safford, AZ (McrSA)	325	346	307	320	363	423	426	351	307	220	Miami, OK (McrSA)	425	423	396	374	395	348	410	356	300	357
La Grande, OR (McrSA)	326	335	377	445	389	410	445	433	381	412	Middlesborough, KY (McrSA)	544	539	542	530	518	460	505	492	517	549
Dayton, TN (McrSA)	327	396	434	441	443	401	na	na	na	na	Milledgeville, GA (McrSA)	496	509	531	495	508	496	533	523	463	459
Liberal, KS (McrSA)	328	375	260	182	154	229	180	164	190	189	Mineral Wells, TX (McrSA)	394	407	316	220	256	345	409	404	347	348
Alamogordo, NM (McrSA)	329	325	313	263	188	167	146	228	342	383	Minot, ND (McrSA)	77	25	5	3	6	4	7	12	21	53
DuBois, PA (McrSA)	330	289	240	195	199	132	165	226	220	288	Mitchell, SD (McrSA)	62	55	33	73	13	60	125	103	188	231
Mexico, MO (McrSA)	331	384	361	343	392	430	473	478	524	468	Moberly, MO (McrSA)	193	233	184	101	132	150	215	286	372	360
Bradford, PA (McrSA)	332	351	330	323	303	234	258	317	288	314	Montrose, CO (McrSA)	232	291	368	365	299	236	182	114	31	14
Tahlequah, OK (McrSA)	333	294	371	278	297	300	320	322	401	413	Morehead City, NC (McrSA)	125	208	294	332	282	202	186	140	132	147
Duncan, OK (McrSA)	334	350	165	116	205	265	330	375	332	278	Morgan City, LA (McrSA)	440	368	257	185	268	255	277	287	277	339
Show Low, AZ (McrSA)	335	387	404	368	378	385	361	338	297	326	Moscow, ID (McrSA)	169	184	278	358	434	415	439	382	302	330
Urbana, OH (McrSA)	336	364	389	422	428	465	525	494	522	473	Moses Lake, WA (McrSA)	92	96	120	130	161	134	91	100	101	122
Prineville, OR (McrSA)	337	359	397	373	414	447	503	422	324	252	Moultrie, GA (McrSA)	488	499	515	475	459	476	498	521	484	507
Natchitoches, LA (McrSA)	338	381	340	313	301	222	179	175	214	274	Mountain Home, AR (McrSA)	451	457	437	423	393	357	377	324	273	296
Charleston-Mattoon, IL (McrSA)	339	405	394	465	448	432	456	474	486	470	Mountain Home, ID (McrSA)	287	253	328	330	306	314	255	232	241	248
Brookhaven, MS (McrSA)	340	324	259	186	217	152	224	180	210	216	Mount Airy, NC (McrSA)	302	342	411	479	477	416	470	467	440	426
Meridian, MS (McrSA)	341	317	285	196	118	175	148	138	147	131	Mount Pleasant, MI (McrSA)	256	257	333	289	343	326	353	305	204	234
Atmore, AL (McrSA)	342	356	400	na	na	na	na	na	na	na	Mount Pleasant, TX (McrSA)	396	304	234	247	178	162	107	56	131	165
Lufkin, TX (McrSA)	343	241	187	273	221	151	181	133	122	61	Mount Sterling, KY (McrSA)	476	452	405	417	407	419	366	400	488	479
Mount Vernon, IL (McrSA)	344	321	255	173	180	102	154	213	227	254	Mount Vernon, IL (McrSA)	344	321	255	173	180	102	154	213	227	254
Athens, TX (McrSA)	345	239	233	234	320	354	338	384	449	441	Mount Vernon, OH (McrSA)	60	51	57	61	80	126	145	170	211	196
Fort Leonard Wood, MO (McrSA)	346	327	219	125	37	28	14	63	146	217	Murray, KY (McrSA)	414	385	421	353	284	301	283	299	400	411
Crawfordsville, IN (McrSA)	347	268	349	424	452	463	422	367	415	336	Muscatine, IA (McrSA)	114	108	93	21	63	68	120	119	141	119

551 Micropolitan Areas	2019	2018	2017	2016	2015	2014	2013	2012	2011	2010	551 Micropolitan Areas	2019	2018	2017	2016	2015	2014	2013	2012	2011	2010
Kingsville, TX (McrSA)	348	252	147	163	190	179	151	117	171	235	Muskogee, OK (McrSA)	179	163	128	75	82	73	112	136	177	250
Martin, TN (McrSA)	349	422	427	449	457	471	471	512	513	499	Nacogdoches, TX (McrSA)	298	249	209	165	150	201	219	229	305	398
Berlin, NH-VT (McrSA)	350	399	383	385	292	280	225	274	365	363	Natchez, MS-LA (McrSA)	519	513	477	396	415	455	523	498	480	497
Shelby, NC (McrSA)	351	411	466	467	453	424	472	471	388	313	Natchitoches, LA (McrSA)	338	381	340	313	301	222	179	175	214	274
Levelland, TX (McrSA)	352	361	291	287	348	420	502	538	555	529	Newberry, SC (McrSA)	410	448	431	378	376	313	376	334	317	298
Fort Madison-Keokuk, IA-IL-MO (McrSA)	353	306	336	366	429	405	346	332	389	372	New Castle, IN (McrSA)	500	491	511	516	514	515	543	544	525	506
El Dorado, AR (McrSA)	354	274	215	201	160	200	166	178	100	158	New Castle, PA (McrSA)	300	251	178	144	124	88	124	172	174	181
Somerset, KY (McrSA)	355	305	334	395	385	337	319	348	349	321	New Philadelphia-Dover, OH (McrSA)	20	22	49	132	204	283	336	355	366	289
Pittsburg, KS (McrSA)	356	372	393	473	503	508	565	559	564	571	Newport, OR (McrSA)	159	230	306	380	368	312	na	na	na	na
Jackson, OH (McrSA)	357	333	387	339	310	248	na	na	na	na	Newport, TN (McrSA)	386	421	458	437	410	445	500	449	508	535
Elizabeth City, NC (McrSA)	358	380	373	341	266	194	251	211	161	179	Newton, IA (McrSA)	424	427	471	448	431	434	469	477	439	448
Blackfoot, ID (McrSA)	359	442	454	388	357	443	509	516	474	429	New Ulm, MN (McrSA)	266	275	245	310	326	368	430	430	374	315
Cullowhee, NC (McrSA)	360	338	407	444	416	421	na	na	na	na	Nogales, AZ (McrSA)	187	226	169	210	245	189	239	181	189	161
Corinth, MS (McrSA)	361	378	413	371	335	257	257	283	322	345	Norfolk, NE (McrSA)	118	151	140	179	119	165	209	265	334	409
Winona, MN (McrSA)	362	343	379	357	353	285	300	302	235	140	North Platte, NE (McrSA)	157	121	70	110	75	38	32	52	98	137
Marinette, WI-MI (McrSA)	363	331	300	251	319	297	326	370	304	238	North Vernon, IN (McrSA)	465	465	435	468	458	436	432	426	454	447
Marion, IN (McrSA)	364	322	309	351	347	292	305	352	378	438	North Wilkesboro, NC (McrSA)	509	506	522	531	516	524	515	513	499	475
Ashtabula, OH (McrSA)	365	400	408	456	442	399	434	464	497	474	Norwalk, OH (McrSA)	136	95	162	243	269	208	276	314	289	272
Alpena, MI (McrSA)	366	432	474	413	417	375	365	381	314	320	Oak Harbor, WA (McrSA)	15	90	172	268	283	220	157	125	142	78
Houghton, MI (McrSA)	367	389	418	399	387	429	488	484	475	501	Ogdensburg-Massena, NY (McrSA)	236	192	180	104	88	111	173	224	206	209
Rochelle, IL (McrSA)	368	433	370	392	354	392	354	296	267	211	Oil City, PA (McrSA)	441	446	391	440	399	373	400	448	420	444
Elkins, WV (McrSA)	369	332	318	283	191	140	na	na	na	na	Okeechobee, FL (McrSA)	400	449	436	367	345	383	442	397	393	423
Freeport, IL (McrSA)	370	416	420	432	402	346	295	313	290	259	Olean, NY (McrSA)	168	103	115	134	61	67	67	92	109	143
Russellville, AR (McrSA)	371	349	353	314	375	404	444	460	437	385	Oneonta, NY (McrSA)	74	111	141	141	89	147	238	236	213	246
Evanston, WY (McrSA)	372	330	297	254	213	154	98	47	15	11	Ontario, OR-ID (McrSA)	321	373	374	446	409	441	461	507	464	437
Salem, OH (McrSA)	373	292	211	204	246	324	390	412	460	465	Opelousas, LA (McrSA)	296	242	146	74	58	46	92	123	112	176
Van Wert, OH (McrSA)	374	360	359	382	394	425	371	420	466	432	Orangeburg, SC (McrSA)	450	458	451	375	330	341	398	344	262	334
Kinston, NC (McrSA)	375	404	448	434	372	338	395	408	339	338	Oskaloosa, IA (McrSA)	406	397	440	425	444	451	514	519	526	495
Payson, AZ (McrSA)	376	466	442	442	436	457	511	462	399	378	Othello, WA (McrSA)	292	284	284	318	295	381	na	na	na	na
Dublin, GA (McrSA)	377	386	482	443	427	358	303	280	294	293	Ottawa, KS (McrSA)	151	202	286	359	370	402	na	na	na	na
Sturgis, MI (McrSA)	378	382	412	438	461	482	506	524	514	458	Ottawa-Peru, IL (McrSA)	231	273	282	255	202	180	133	166	201	146
Pearsall, TX (McrSA)	379	na	na	na	na	na	na	na	na	na	Ottumwa, IA (McrSA)	166	133	168	230	223	295	364	347	296	286
El Campo, TX (McrSA)	380	301	205	171	243	305	373	410	358	319	Owatonna, MN (McrSA)	279	328	317	231	214	164	216	203	157	97
Fernley, NV (McrSA)	381	447	382	302	279	303	301	259	166	98	Owosso, MI (McrSA)	407	420	455	472	493	494	546	553	495	464
Brookings, OR (McrSA)	382	403	430	485	472	475	539	533	461	415	Oxford, MS (McrSA)	9	49	36	17	17	14	11	33	26	42
Great Bend, KS (McrSA)	383	348	293	252	322	319	383	333	369	292	Oxford, NC (McrSA)	81	40	123	150	112	77	na	na	na	na
Grand Rapids, MN (McrSA)	384	293	190	na	na	na	na	na	na	na	Ozark, AL (McrSA)	167	179	181	137	72	57	30	28	48	88
Laurel, MS (McrSA)	385	339	177	105	85	41	63	66	88	134	Paducah, KY-IL (McrSA)	41	79	32	32	19	31	10	31	33	44
Newport, TN (McrSA)	386	421	458	437	410	445	500	449	508	535	Pahrump, NV (McrSA)	294	358	426	342	317	349	344	365	306	241
Maysville, KY (McrSA)	387	379	332	386	405	454	524	485	544	490	Palatka, FL (McrSA)	494	515	524	509	506	498	499	479	443	500
Roswell, NM (McrSA)	388	439	385	364	374	344	385	378	320	347	Palestine, TX (McrSA)	226	167	237	164	236	166	135	189	207	245



551 Micropolitan Areas	2019	2018	2017	2016	2015	2014	2013	2012	2011	2010	551 Micropolitan Areas	2019	2018	2017	2016	2015	2014	2013	2012	2011	2010
London, KY (McrSA)	389	354	402	356	289	218	175	242	251	302	Pampa, TX (McrSA)	322	236	130	122	173	250	318	336	264	267
Plymouth, IN (McrSA)	390	412	339	397	413	384	411	487	404	349	Paragould, AR (McrSA)	217	166	216	308	380	382	446	446	471	424
Fairfield, IA (McrSA)	391	355	425	453	502	497	na	na	na	na	Paris, TN (McrSA)	54	149	252	316	249	302	358	395	371	425
Alexander City, AL (McrSA)	392	453	499	na	na	na	na	na	na	na	Paris, TX (McrSA)	71	104	101	47	68	95	101	127	192	232
Ludington, MI (McrSA)	393	367	447	403	479	505	na	na	na	na	Parsons, KS (McrSA)	433	470	439	460	470	474	536	470	523	550
Mineral Wells, TX (McrSA)	394	407	316	220	256	345	409	404	347	348	Payson, AZ (McrSA)	376	466	442	442	436	457	511	462	399	378
Harrison, AR (McrSA)	395	388	429	350	285	213	289	278	375	376	Pearsall, TX (McrSA)	379	na	na	na	na	na	na	na	na	na
Mount Pleasant, TX (McrSA)	396	304	234	247	178	162	107	56	131	165	Pecos, TX (McrSA)	305	307	326	390	460	503	558	539	540	565
Angola, IN (McrSA)	397	312	388	429	440	466	486	526	512	453	Pella, IA (McrSA)	101	147	251	na	na	na	na	na	na	na
McAlester, OK (McrSA)	398	313	202	118	105	83	82	76	64	159	Peru, IN (McrSA)	520	475	487	517	527	534	566	573	563	534
Sterling, IL (McrSA)	399	476	406	383	342	249	220	258	286	287	Picayune, MS (McrSA)	472	497	452	376	381	351	349	346	395	387
Okeechobee, FL (McrSA)	400	449	436	367	345	383	442	397	393	423	Pierre, SD (McrSA)	98	57	114	91	91	84	89	106	73	114
Campbellsville, KY (McrSA)	401	472	489	478	487	453	421	482	543	554	Pinehurst-Southern Pines, NC (McrSA)	44	27	103	149	121	72	52	83	34	24
Gaffney, SC (McrSA)	402	469	456	455	424	390	394	377	386	368	Pittsburg, KS (McrSA)	356	372	393	473	503	508	565	559	564	571
Albertville, AL (McrSA)	403	438	481	394	377	396	457	438	380	325	Plainview, TX (McrSA)	511	429	441	421	466	394	412	434	506	539
Greeneville, TN (McrSA)	404	347	372	415	484	469	464	458	387	279	Platteville, WI (McrSA)	154	154	152	135	164	253	321	325	392	352
Shawnee, OK (McrSA)	405	344	246	202	234	192	262	285	261	304	Plattsburgh, NY (McrSA)	40	37	25	55	36	23	44	21	29	47
Oskaloosa, IA (McrSA)	406	397	440	425	444	451	514	519	526	495	Plymouth, IN (McrSA)	390	412	339	397	413	384	411	487	404	349
Owosso, MI (McrSA)	407	420	455	472	493	494	546	553	495	464	Point Pleasant, WV-OH (McrSA)	479	450	464	401	316	376	437	366	427	460
Cadillac, MI (McrSA)	408	485	508	497	517	518	542	552	521	486	Ponca City, OK (McrSA)	306	231	280	281	336	371	431	389	419	366
Central City, KY (McrSA)	409	482	424	na	na	na	na	na	na	na	Pontiac, IL (McrSA)	270	262	207	280	211	224	296	289	338	271
Newberry, SC (McrSA)	410	448	431	378	376	313	376	334	317	298	Poplar Bluff, MO (McrSA)	426	394	343	245	201	160	122	156	236	249
Washington, NC (McrSA)	411	406	403	450	437	395	428	429	340	386	Portales, NM (McrSA)	539	536	541	492	482	504	535	528	547	552
Jacksonville, IL (McrSA)	412	395	362	416	391	379	388	391	413	467	Port Angeles, WA (McrSA)	106	164	231	212	166	144	162	148	86	93
Washington Court House, OH (McrSA)	413	340	469	476	449	438	449	387	448	446	Port Clinton, OH (McrSA)	214	228	164	99	125	182	na	na	na	na
Murray, KY (McrSA)	414	385	421	353	284	301	283	299	400	411	Port Lavaca, TX (McrSA)	235	156	61	51	113	113	na	na	na	na
Searcy, AR (McrSA)	415	415	376	295	219	130	143	132	156	182	Portsmouth, OH (McrSA)	418	398	366	333	290	239	292	275	303	290
Emporia, KS (McrSA)	416	425	457	477	465	413	455	444	510	523	Pottsville, PA (McrSA)	161	158	143	127	120	115	168	207	182	207
Vermillion, SD (McrSA)	417	493	486	418	396	414	467	468	527	528	Price, UT (McrSA)	468	484	399	345	360	322	297	223	252	340
Portsmouth, OH (McrSA)	418	398	366	333	290	239	292	275	303	290	Prineville, OR (McrSA)	337	359	397	373	414	447	503	422	324	252
Coldwater, MI (McrSA)	419	478	497	499	509	514	519	531	511	440	Pullman, WA (McrSA)	22	106	92	124	102	156	197	266	356	341
Toccoa, GA (McrSA)	420	383	315	227	304	356	335	267	351	407	Quincy, IL-MO (McrSA)	55	62	107	189	126	141	206	225	271	275
Cornelia, GA (McrSA)	421	418	478	461	473	473	462	450	431	396	Raymondville, TX (McrSA)	534	548	520	513	513	520	550	502	554	558
Corsicana, TX (McrSA)	422	352	226	226	235	288	333	380	409	455	Red Bluff, CA (McrSA)	36	59	127	148	187	240	195	209	114	90
Cedartown, GA (McrSA)	423	409	386	457	471	452	479	453	410	390	Red Wing, MN (McrSA)	91	70	58	138	129	129	192	187	222	153
Newton, IA (McrSA)	424	427	471	448	431	434	469	477	439	448	Rexburg, ID (McrSA)	315	282	351	391	423	458	447	399	326	327
Miami, OK (McrSA)	425	423	396	374	395	348	410	356	300	357	Richmond, IN (McrSA)	293	303	289	338	384	400	459	486	405	332
Poplar Bluff, MO (McrSA)	426	394	343	245	201	160	122	156	236	249	Richmond-Berea, KY (McrSA)	196	168	166	154	111	177	229	284	364	427
Danville, KY (McrSA)	427	376	380	452	446	364	310	373	442	456	Rio Grande City, TX (McrSA)	454	424	344	248	296	298	314	345	417	449
McMinnville, TN (McrSA)	428	393	472	430	454	462	530	473	424	342	Riverton, WY (McrSA)	251	173	94	64	66	70	49	71	71	111

551 Micropolitan Areas	2019	2018	2017	2016	2015	2014	2013	2012	2011	2010	551 Micropolitan Areas	2019	2018	2017	2016	2015	2014	2013	2012	2011	2010
Vernon, TX (McrSA)	429	414	365	271	227	317	367	413	505	555	Roanoke Rapids, NC (McrSA)	508	531	528	498	451	403	468	480	469	496
Danville, VA (McrSA)	430	390	462	464	388	433	na	na	na	na	Rochelle, IL (McrSA)	368	433	370	392	354	392	354	296	267	211
Macomb, IL (McrSA)	431	445	392	419	373	363	357	392	430	517	Rockingham, NC (McrSA)	495	431	501	493	499	499	504	435	496	478
Marion, NC (McrSA)	432	451	479	500	504	495	na	na	na	na	Rock Springs, WY (McrSA)	59	67	20	31	24	19	29	29	12	5
Parsons, KS (McrSA)	433	470	439	460	470	474	536	470	523	550	Rolla, MO (McrSA)	137	130	189	174	106	71	116	139	180	225
Hereford, TX (McrSA)	434	419	341	300	344	377	438	496	507	510	Roseburg, OR (McrSA)	194	260	329	370	390	398	393	362	276	264
Hillsdale, MI (McrSA)	435	436	476	474	492	506	na	na	na	na	Roswell, NM (McrSA)	388	439	385	364	374	344	385	378	320	347
Vicksburg, MS (McrSA)	436	435	415	325	253	184	144	143	102	46	Ruidoso, NM (McrSA)	532	518	525	na	na	na	na	na	na	na
Arkansas City-Winfield, KS (McrSA)	437	402	303	246	305	397	465	489	445	463	Russellville, AR (McrSA)	371	349	353	314	375	404	444	460	437	385
Alma, MI (McrSA)	438	467	495	428	419	439	492	543	548	556	Ruston, LA (McrSA)	205	188	97	41	23	39	65	19	76	105
Bedford, IN (McrSA)	439	474	475	502	512	509	540	550	531	521	Rutland, VT (McrSA)	163	197	218	223	192	142	193	188	215	199
Morgan City, LA (McrSA)	440	368	257	185	268	255	277	287	277	339	Safford, AZ (McrSA)	325	346	307	320	363	423	426	351	307	220
Oil City, PA (McrSA)	441	446	391	440	399	373	400	448	420	444	St. Marys, GA (McrSA)	220	286	201	187	230	225	202	154	143	173
Arkadelphia, AR (McrSA)	442	430	468	470	435	406	380	316	321	404	St. Marys, PA (McrSA)	269	329	352	na	na	na	na	na	na	na
Fairmont, MN (McrSA)	443	428	459	na	na	na	na	na	na	na	Salem, OH (McrSA)	373	292	211	204	246	324	390	412	460	465
DeRidder, LA (McrSA)	444	408	327	242	318	277	285	262	328	392	Salina, KS (McrSA)	32	91	118	126	67	104	109	109	99	84
Jennings, LA (McrSA)	445	434	378	na	na	na	na	na	na	na	Sandpoint, ID (McrSA)	297	374	446	410	406	389	na	na	na	na
Grants, NM (McrSA)	446	477	496	482	447	428	423	388	447	405	Sandusky, OH (McrSA)	252	314	217	145	117	91	na	na	na	na
Wabash, IN (McrSA)	447	371	381	327	401	449	480	529	494	487	Sanford, NC (McrSA)	248	243	331	307	218	168	140	126	121	81
Galesburg, IL (McrSA)	448	357	355	412	397	387	451	466	493	503	Sault Ste. Marie, MI (McrSA)	504	488	414	344	270	339	402	398	345	414
Alice, TX (McrSA)	449	315	192	140	215	252	325	293	218	163	Sayre, PA (McrSA)	225	155	69	35	26	40	87	135	191	256
Orangeburg, SC (McrSA)	450	458	451	375	330	341	398	344	262	334	Scottsbluff, NE (McrSA)	189	112	131	50	55	44	28	24	43	99
Mountain Home, AR (McrSA)	451	457	437	423	393	357	377	324	273	296	Scottsboro, AL (McrSA)	464	486	461	389	411	418	483	495	509	476
Bluefield, WV-VA (McrSA)	452	377	301	208	144	81	126	122	123	178	Searcy, AR (McrSA)	415	415	376	295	219	130	143	132	156	182
Adrian, MI (McrSA)	453	460	480	469	455	470	495	517	468	403	Sedalia, MO (McrSA)	291	277	235	266	302	269	268	273	329	350
Rio Grande City, TX (McrSA)	454	424	344	248	296	298	314	345	417	449	Selingsgrove, PA (McrSA)	97	190	281	335	356	318	374	379	313	268
Bennettsville, SC (McrSA)	455	498	503	484	418	490	551	562	535	522	Selma, AL (McrSA)	506	508	514	459	481	468	522	522	489	466
Jesup, GA (McrSA)	456	443	432	398	329	308	339	295	244	202	Seneca, SC (McrSA)	122	174	272	275	349	316	294	276	254	228
Huntington, IN (McrSA)	457	441	445	433	491	502	510	547	537	513	Seneca Falls, NY (McrSA)	240	214	273	213	220	158	185	190	232	291
West Point, MS (McrSA)	458	401	419	na	na	na	369	329	406	355	Sevierville, TN (McrSA)	35	68	176	261	165	227	210	159	84	65
Sikeston, MO (McrSA)	459	391	311	205	163	207	275	312	391	394	Seymour, IN (McrSA)	73	21	79	93	175	183	158	212	179	172
Lamesa, TX (McrSA)	460	426	375	347	404	483	545	558	574	574	Shawano, WI (McrSA)	278	240	253	249	203	276	na	na	na	na
Camden, AR (McrSA)	461	480	460	381	355	342	315	319	407	462	Shawnee, OK (McrSA)	405	344	246	202	234	192	262	285	261	304
Coffeyville, KS (McrSA)	462	440	367	297	255	329	348	358	396	442	Shelby, NC (McrSA)	351	411	466	467	453	424	472	471	388	313
Beatrice, NE (McrSA)	463	468	438	387	350	367	404	425	519	532	Shelbyville, TN (McrSA)	43	33	67	82	93	155	232	248	274	261
Scottsboro, AL (McrSA)	464	486	461	389	411	418	483	495	509	476	Shelton, WA (McrSA)	153	222	304	298	254	260	204	128	44	60
North Vernon, IN (McrSA)	465	465	435	468	458	436	432	426	454	447	Sheridan, WY (McrSA)	61	26	23	24	49	16	15	5	11	12
Ionia, MI (McrSA)	466	507	465	435	462	442	na	na	na	na	Show Low, AZ (McrSA)	335	387	404	368	378	385	361	338	297	326
Arcadia, FL (McrSA)	467	502	504	518	532	525	547	536	479	516	Sidney, OH (McrSA)	18	12	27	67	95	109	117	81	139	83
Price, UT (McrSA)	468	484	399	345	360	322	297	223	252	340	Sikeston, MO (McrSA)	459	391	311	205	163	207	275	312	391	394
Vidalia, GA (McrSA)	469	444	444	411	365	369	433	405	368	420	Silver City, NM (McrSA)	530	549	539	525	528	529	571	576	572	563

551 Micropolitan Areas	2019	2018	2017	2016	2015	2014	2013	2012	2011	2010	551 Micropolitan Areas	2019	2018	2017	2016	2015	2014	2013	2012	2011	2010
Lumberton, NC (McrSA)	470	494	492	504	500	486	460	443	432	454	Snyder, TX (McrSA)	295	170	98	94	176	293	386	423	421	484
Kirksville, MO (McrSA)	471	487	500	436	369	360	387	360	452	512	Somerset, KY (McrSA)	355	305	334	395	385	337	319	348	349	321
Picayune, MS (McrSA)	472	497	452	376	381	351	349	346	395	387	Somerset, PA (McrSA)	316	365	358	319	281	286	273	327	315	358
Grenada, MS (McrSA)	473	456	483	487	510	492	531	488	549	536	Sonora, CA (McrSA)	119	171	254	331	307	245	228	174	90	39
Brevard, NC (McrSA)	474	490	509	506	525	522	544	509	470	435	Spearfish, SD (McrSA)	83	140	230	296	239	172	138	74	117	108
Taos, NM (McrSA)	475	521	527	489	474	467	425	341	247	184	Spencer, IA (McrSA)	191	198	105	168	145	119	156	185	278	203
Mount Sterling, KY (McrSA)	476	452	405	417	407	419	366	400	488	479	Spirit Lake, IA (McrSA)	178	100	112	198	257	228	291	359	377	305
Jacksonville, TX (McrSA)	477	413	384	337	398	411	396	414	467	519	Starkville, MS (McrSA)	185	137	154	229	216	195	190	182	150	120
Lincoln, IL (McrSA)	478	495	491	486	468	461	458	511	533	525	Statesboro, GA (McrSA)	245	267	347	324	351	330	334	301	354	406
Point Pleasant, WV-OH (McrSA)	479	450	464	401	316	376	437	366	427	460	Steamboat Springs, CO (McrSA)	215	207	119	54	78	139	na	na	na	na
Douglas, GA (McrSA)	480	461	493	491	505	512	534	497	515	488	Stephenville, TX (McrSA)	211	285	310	321	371	372	417	437	416	410
Coshocton, OH (McrSA)	481	437	354	408	420	440	501	501	504	457	Sterling, CO (McrSA)	89	75	45	70	146	174	230	250	203	257
Marshall, MO (McrSA)	482	479	467	404	425	464	435	476	518	547	Sterling, IL (McrSA)	399	476	406	383	342	249	220	258	286	287
Frankfort, IN (McrSA)	483	454	463	427	438	422	448	481	403	434	Stevens Point, WI (McrSA)	24	38	44	111	76	75	106	94	133	112
Centralia, IL (McrSA)	484	492	453	431	386	378	454	451	435	485	Stillwater, OK (McrSA)	203	145	72	12	53	110	171	205	295	260
Logansport, IN (McrSA)	485	473	428	447	490	481	478	499	492	445	Storm Lake, IA (McrSA)	230	204	109	89	149	190	244	261	350	380
Zapata, TX (McrSA)	486	392	206	136	156	274	na	na	na	na	Sturgis, MI (McrSA)	378	382	412	438	461	482	506	524	514	458
Bucyrus, OH (McrSA)	487	471	494	483	496	478	518	542	552	538	Sulphur Springs, TX (McrSA)	308	225	145	88	115	196	269	308	383	436
Moultrie, GA (McrSA)	488	499	515	475	459	476	498	521	484	507	Summerville, GA (McrSA)	489	455	535	529	536	536	576	572	565	545
Summerville, GA (McrSA)	489	455	535	529	536	536	576	572	565	545	Summit Park, UT (McrSA)	2	42	9	5	16	20	na	na	na	na
Taylorville, IL (McrSA)	490	500	485	503	489	488	463	493	534	544	Sunbury, PA (McrSA)	255	254	325	301	271	296	350	315	301	353
Bogalusa, LA (McrSA)	491	463	422	414	467	444	475	510	487	477	Susanville, CA (McrSA)	199	221	321	274	195	145	95	61	62	69
Glasgow, KY (McrSA)	492	462	450	501	522	507	521	545	528	515	Sweetwater, TX (McrSA)	254	255	277	264	263	327	381	465	425	472
Atchison, KS (McrSA)	493	524	529	521	531	523	538	527	541	461	Tahlequah, OK (McrSA)	333	294	371	278	297	300	320	322	401	413
Palatka, FL (McrSA)	494	515	524	509	506	498	499	479	443	500	Talladega-Sylacauga, AL (McrSA)	283	259	322	284	361	408	401	310	208	133
Rockingham, NC (McrSA)	495	431	501	493	499	499	504	435	496	478	Taos, NM (McrSA)	475	521	527	489	474	467	425	341	247	184
Milledgeville, GA (McrSA)	496	509	531	495	508	496	533	523	463	459	Taylorville, IL (McrSA)	490	500	485	503	489	488	463	493	534	544
Maryville, MO (McrSA)	497	464	470	481	430	456	491	514	520	546	The Dalles, OR (McrSA)	21	46	63	92	99	69	99	93	95	151
Big Stone Gap, VA (McrSA)	498	511	395	304	189	80	na	na	na	na	Thomaston, GA (McrSA)	525	522	523	510	497	489	516	520	473	541
Mayfield, KY (McrSA)	499	501	502	505	485	500	529	561	559	561	Thomasville, GA (McrSA)	314	296	261	188	128	153	187	199	184	230
New Castle, IN (McrSA)	500	491	511	516	514	515	543	544	525	506	Tiffin, OH (McrSA)	318	287	308	311	287	230	279	277	281	239
Union City, TN-KY (McrSA)	501	496	505	458	450	386	427	442	355	397	Tifton, GA (McrSA)	319	246	186	228	264	226	290	309	223	297
Beeville, TX (McrSA)	502	417	302	219	288	431	497	541	501	498	Toccoa, GA (McrSA)	420	383	315	227	304	356	335	267	351	407
Brownsville, TN (McrSA)	503	525	526	na	na	na	na	na	na	na	Torrington, CT (McrSA)	88	47	11	33	47	12	22	20	19	18
Sault Ste. Marie, MI (McrSA)	504	488	414	344	270	339	402	398	345	414	Traverse City, MI (McrSA)	28	4	17	42	103	121	104	129	75	45
West Plains, MO (McrSA)	505	503	473	466	488	472	494	441	465	443	Troy, AL (McrSA)	242	326	265	192	233	216	284	263	255	215
Selma, AL (McrSA)	506	508	514	459	481	468	522	522	489	466	Truckee-Grass Valley, CA (McrSA)	11	3	48	133	131	90	78	86	22	17
Laurinburg, NC (McrSA)	507	510	516	523	521	501	481	475	491	482	Tullahoma-Manchester, TN (McrSA)	51	64	86	66	86	66	115	134	148	94



551 Micropolitan Areas	2019	2018	2017	2016	2015	2014	2013	2012	2011	2010	551 Micropolitan Areas	2019	2018	2017	2016	2015	2014	2013	2012	2011	2010
Roanoke Rapids, NC (McrSA)	508	531	528	498	451	403	468	480	469	496	Tupelo, MS (McrSA)	110	53	62	79	71	32	56	65	104	124
North Wilkesboro, NC (McrSA)	509	506	522	531	516	524	515	513	499	475	Ukiah, CA (McrSA)	94	88	153	241	244	219	223	195	124	79
Henderson, NC (McrSA)	510	481	510	488	478	448	474	452	434	430	Union City, TN-KY (McrSA)	501	496	505	458	450	386	427	442	355	397
Plainview, TX (McrSA)	511	429	441	421	466	394	412	434	506	539	Urbana, OH (McrSA)	336	364	389	422	428	465	525	494	522	473
Americus, GA (McrSA)	512	528	518	496	501	493	556	532	500	505	Uvalde, TX (McrSA)	274	157	137	216	228	254	260	326	412	471
Martinsville, VA (McrSA)	513	504	519	512	483	526	564	530	532	520	Valley, AL (McrSA)	536	544	549	519	526	535	573	575	575	564
Malvern, AR (McrSA)	514	505	498	471	475	437	na	na	na	na	Van Wert, OH (McrSA)	374	360	359	382	394	425	371	420	466	432
Greenville, MS (McrSA)	515	514	507	511	515	491	548	563	561	559	Vermillion, SD (McrSA)	417	493	486	418	396	414	467	468	527	528
Magnolia, AR (McrSA)	516	517	488	451	469	427	453	472	398	317	Vernal, UT (McrSA)	299	256	174	166	242	198	270	269	185	160
Gallup, NM (McrSA)	517	512	517	508	445	393	436	396	414	480	Vernon, TX (McrSA)	429	414	365	271	227	317	367	413	505	555
Canton, IL (McrSA)	518	520	506	514	494	484	496	546	545	540	Vicksburg, MS (McrSA)	436	435	415	325	253	184	144	143	102	46
Natchez, MS-LA (McrSA)	519	513	477	396	415	455	523	498	480	497	Vidalia, GA (McrSA)	469	444	444	411	365	369	433	405	368	420
Peru, IN (McrSA)	520	475	487	517	527	534	566	573	563	534	Vincennes, IN (McrSA)	284	227	223	178	251	258	249	257	279	309
Wauchula, FL (McrSA)	521	516	513	528	534	531	554	557	542	551	Vineyard Haven, MA (McrSA)	26	29	14	23	18	17	na	na	na	na
Greenwood, MS (McrSA)	522	523	490	402	359	289	372	390	455	451	Wabash, IN (McrSA)	447	371	381	327	401	449	480	529	494	487
Cleveland, MS (McrSA)	523	489	449	463	408	412	484	491	530	548	Wahpeton, ND-MN (McrSA)	208	210	225	303	315	362	397	417	418	364
Cordele, GA (McrSA)	524	530	538	524	523	527	562	560	551	557	Wapakoneta, OH (McrSA)	80	101	150	215	293	311	342	354	336	311
Thomaston, GA (McrSA)	525	522	523	510	497	489	516	520	473	541	Warren, PA (McrSA)	281	248	151	180	258	333	304	340	308	373
Clewiston, FL (McrSA)	526	519	530	522	507	533	567	549	477	417	Warrensburg, MO (McrSA)	260	323	258	175	179	272	256	235	291	354
McComb, MS (McrSA)	527	527	443	439	498	487	482	416	459	422	Warsaw, IN (McrSA)	156	141	59	106	139	203	271	342	309	227
Fort Payne, AL (McrSA)	528	526	533	na	na	na	na	na	na	na	Washington, IN (McrSA)	42	86	121	193	196	287	343	372	408	335
Deming, NM (McrSA)	529	459	360	272	182	197	189	240	323	391	Washington, NC (McrSA)	411	406	403	450	437	395	428	429	340	386
Silver City, NM (McrSA)	530	549	539	525	528	529	571	576	572	563	Washington Court House, OH (McrSA)	413	340	469	476	449	438	449	387	448	446
Connersville, IN (McrSA)	531	529	512	527	519	528	553	534	538	533	Watertown, SD (McrSA)	212	209	163	221	140	171	231	186	170	197
Ruidoso, NM (McrSA)	532	518	525	na	na	na	na	na	na	na	Watertown-Fort Atkinson, WI (McrSA)	121	74	75	152	153	125	111	120	74	22
Blytheville, AR (McrSA)	533	483	484	407	456	479	485	506	516	483	Wauchula, FL (McrSA)	521	516	513	528	534	531	554	557	542	551
Raymondville, TX (McrSA)	534	548	520	513	513	520	550	502	554	558	Waycross, GA (McrSA)	323	353	417	406	433	391	420	393	311	375
Logan, WV (McrSA)	535	538	521	480	400	365	na	na	na	na	Weatherford, OK (McrSA)	234	232	132	65	143	210	299	383	319	262
Valley, AL (McrSA)	536	544	549	519	526	535	573	575	575	564	West Plains, MO (McrSA)	505	503	473	466	488	472	494	441	465	443
Bainbridge, GA (McrSA)	537	533	547	494	464	477	541	548	539	542	West Point, MS (McrSA)	458	401	419	na	na	na	369	329	406	355
Forrest City, AR (McrSA)	538	532	544	515	480	435	378	431	481	450	Whitewater-Elkhorn, WI (McrSA)	31	30	54	98	141	118	121	152	89	37
Portales, NM (McrSA)	539	536	541	492	482	504	535	528	547	552	Williston, ND (McrSA)	69	41	2	2	2	2	4	22	110	195
Forest City, NC (McrSA)	540	535	540	526	524	510	532	505	426	351	Willmar, MN (McrSA)	66	84	80	114	135	114	177	160	70	48
Eufaula, AL-GA (McrSA)	541	534	532	na	na	na	na	na	na	na	Wilmington, OH (McrSA)	148	195	290	276	265	215	287	256	193	130
Bastrop, LA (McrSA)	542	543	537	520	533	517	570	568	566	566	Wilson, NC (McrSA)	175	177	182	107	92	64	61	72	69	52
Hope, AR (McrSA)	543	537	534	na	na	na	na	na	na	na	Winnemucca, NV (McrSA)	134	217	138	52	4	8	na	na	na	na
Middlesborough, KY (McrSA)	544	539	542	530	518	460	505	492	517	549	Winona, MN (McrSA)	362	343	379	357	353	285	300	302	235	140

551 Micropolitan Areas	2019	2018	2017	2016	2015	2014	2013	2012	2011	2010	551 Micropolitan Areas	2019	2018	2017	2016	2015	2014	2013	2012	2011	2010
Espanola, NM (McrSA)	545	546	548	534	530	511	466	402	327	300	Wisconsin Rapids-Marshfield, WI (McrSA)	124	183	222	162	77	56	55	73	51	43
Las Vegas, NM (McrSA)	546	542	550	490	422	374	429	411	402	419	Woodward, OK (McrSA)	238	290	167	95	157	232	293	292	275	240
Clarksdale, MS (McrSA)	547	547	543	533	463	513	563	566	567	569	Wooster, OH (McrSA)	5	5	34	84	110	112	167	200	163	135
Kennett, MO (McrSA)	548	540	536	507	511	521	561	567	573	570	Worthington, MN (McrSA)	219	245	275	352	277	212	218	243	168	96
Indianola, MS (McrSA)	549	545	546	535	520	519	572	570	568	573	Yankton, SD (McrSA)	70	146	250	348	278	233	245	255	248	328
Fitzgerald, GA (McrSA)	550	541	551	536	535	532	575	574	569	572	Zanesville, OH (McrSA)	173	131	199	257	276	231	199	268	316	322
Helena-West Helena, AR (McrSA)	551	550	545	532	529	530	559	551	571	575	Zapata, TX (McrSA)	486	392	206	136	156	274	na	na	na	na